



Public Auction 367

Tuesday

28th March 2023 at 2pm

THE STAMP GROUP

Philatelists & Auctioneers

Tel: 01606 40047 - Fax: 01606 41584



195



459



334



319



318



326



250



254



324



Ex 479



425



523



257

Public Stamp Auction - Property of 28 vendors

Stamps and Postal History of the World

To be held at:

The Bowdon rooms, The Firs, Altrincham, WA14 2TQ



139



525



138



N° 13612



N° 00843



507



238



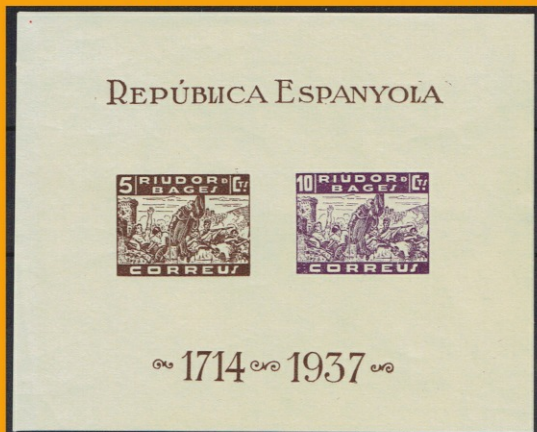
232



Ex 228



517



578



Ex 573

Sale Number 367 - Tuesday 28th March 2023

NEW VENUE

To be held at:

The Bowdon Rooms, The Firs, Altrincham, WA14 2TQ

AUCTION STARTS AT 2.00 P.M.

VIEWING times: On the auction day from 9.30am to 1.15pm

Viewing at our offices prior to the sale by appointment
267 Middlewich Rd, Northwich, Cheshire, CW9 7DR - Tel 01606 40047

Bid and view on our website at www.stampgroup.net

TERMS OF BUSINESS

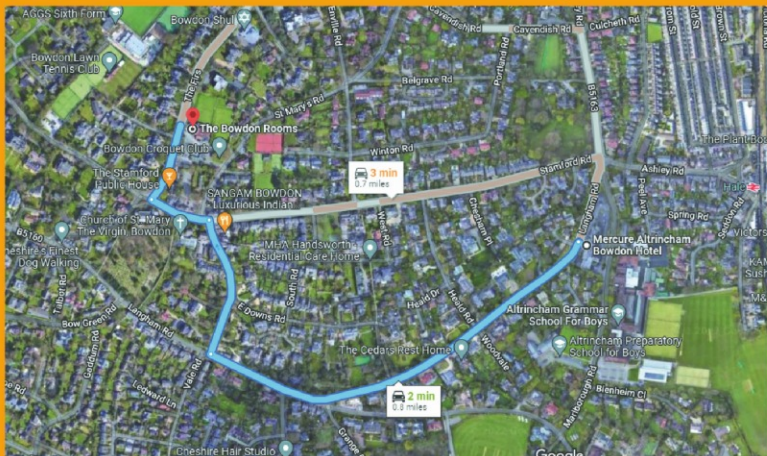
POSTAL BIDDERS: POSTAL BID FORM AT THE BACK OF CATALOGUE. SUCCESSFUL BIDDERS WILL BE NOTIFIED BY PROFORMA INVOICE. CREDIT CARD PAYMENTS DESPATCHED IMMEDIATELY.

TELEPHONE BIDS: THESE CAN BE MADE PRIOR TO THE SALE BY RINGING 01606 40047. IF YOU WISH TO BID 'LIVE' DURING THE SALE PLEASE TELEPHONE TO BOOK YOUR CALL.

ROOM BIDDERS: PAYMENT BY CASH, CREDIT OR DEBIT CARD (no surcharge), CHEQUES UP TO £50 TO KNOWN CLIENTS OR BY PRIOR ARRANGEMENT

PLEASE NOTE: A BUYERS PREMIUM OF 15% (INCLUSIVE OF VAT) WILL BE ADDED TO YOUR INVOICE. THIS WILL BE ITEMISED SEPARATELY

Situated less than 1 mile from the previous Hotel

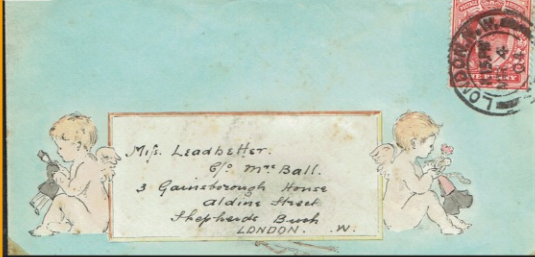


CAR PARKING: THERE IS AMPLE ON SITE PARKING WHEN TAKING DELIVERY OF BULKY OR HEAVY LOTS CLIENTS MAY DRIVE TO THE DOORWAY OF THE AUCTION ROOM TO LOAD.

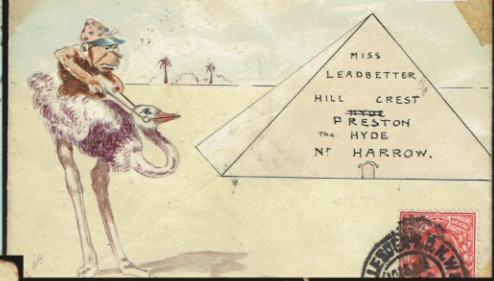
REFRESHMENTS: FREE DRINKS ARE AVAILABLE IN THE AUCTION ROOM.

SMOKING/VAPES IS NOT PERMITTED IN THE AUCTION ROOM AT ANY TIME

385



402



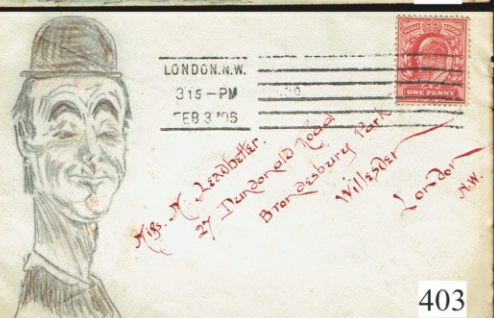
384



413



401



409



412

405



LONDON.N.W
2. 15 PM
FEB 16 06
Miss Leadbetter
4 Park Mansions
Chapter Road
Willesden Green



406



LONDON.N.W
5. 30 PM
FEB 16 06

No. 20.



Miss Leadbetter
4 Park Mansions
Chapter Road
Willesden

198

Private circulation in China
China
Postkarte - Weltpostverein
Carte postale - Union postale universelle

Madame L. Baumé
51, Rue de Lisbonne
Paris



390

Miss M. Leadbetter
54 UPPER BRIDGE ST
W.

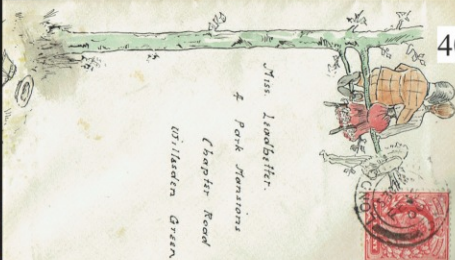
392



Miss M. Leadbetter
c/o Mrs Ball,
3 Gainsborough House
Aldine Street
Shepherds Bush
LONDON



407



Miss Leadbetter
4 Park Mansions
Chapter Road
Willesden Green.

388



Miss M. Leadbetter
c/o Mrs Ball
3 Gainsborough House
Aldine Street
Shepherds Bush Green
W.

400



Miss Leadbetter
c/o Mrs Bailey
Hill Crest
Preston
in the Hyde
Harrow.

LONDON.N.W
5 30 -PM
OCT 18 06



85

1954 SAS Military Cover from Penang
'Who Dares Wins Crest on reverse'

253

UNION POSTALE UNIVERSELLE
GAMBIA (GAMBIE)
POST CARD
THE ADDRESS ONLY TO BE WRITTEN ON THIS SIDE.



SPECIMEN

THE ANNEXED CARD IS INTENDED FOR THE ANSWER.
LA CARTE D'ANNEXE EST DESTINEE A LA REPONSE.

POST CARD
SIERRA LEONE
ADDRESS ONLY TO BE WRITTEN ON THIS SIDE.



SPECIMEN

557

556



REGISTERED LETTER.
THIS LETTER MUST BE GIVEN TO AN OFFICER OF THE POST OFFICE TO BE REGISTERED AND A RECEIPT OBTAINED FOR IT.

SPECIMEN

UNION POSTALE UNIVERSELLE
LEEWARD ISLANDS (ILES SOUS LE VENT)
POST CARD
THE ADDRESS ONLY TO BE WRITTEN ON THIS SIDE.



SPECIMEN

468

THE ANNEXED CARD IS INTENDED FOR THE ANSWER.
LA CARTE D'ANNEXE EST DESTINEE A LA REPONSE.

555



REGISTERED LETTER.
THIS LETTER MUST BE GIVEN TO AN OFFICER OF THE POST OFFICE TO BE REGISTERED AND A RECEIPT OBTAINED FOR IT.

THE STAMP TO PAY THE POSTAGE MUST BE PLACED HERE.

SPECIMEN



*Alex. Christie Esq.
Whicksville
Ohio
U.S.*

J. V. Sawyer P.O.

OTTAWA ONT CANADA
JAN 21 1865
C.W.

*Christie Esq.
Whicksville
Pittsburgh Penna U.S.*

OTTAWA ONT CANADA
JAN 29 1865
C.W.

176

179



REGISTERED LETTER.
 THIS LETTER MUST BE GIVEN TO AN OFFICER OF THE POST OFFICE TO BE REGISTERED, AND THE ADDRESS MUST BE WRITTEN ON THIS SIDE.

458



REGISTERED LETTER.
 THIS LETTER MUST BE GIVEN TO AN OFFICER OF THE POST OFFICE TO BE REGISTERED, AND THE ADDRESS MUST BE WRITTEN ON THIS SIDE.



SPECIMEN

489

423

UNION POSTALE UNIVERSELLE
 GRENADA (LA GRENADE)
 POST CARD
 THE ADDRESS ONLY TO BE WRITTEN ON THIS SIDE.



SPECIMEN

3 3 3
 8 8 8
 OTTAWA
 CONTRACTOR
 PERRYMANVILLE
 PENNSYLVANIA
 U.S.

178

161

UNIVERSAL POSTAL UNION.
 BRITISH GUIANA GUYANE BRITANNIQUE
 Post Card.



Only the address to be written on this side.

ADDRESS

CHESTER
 1875
 LIMPON
 Perf. 14

313

SPECIMEN

513

REGISTERED LETTER.
 THIS LETTER MUST BE GIVEN TO AN OFFICER OF THE POST OFFICE TO BE REGISTERED, AND THE ADDRESS MUST BE WRITTEN ON THIS SIDE.

THE STAMP TO PAY THE POSTAGE MUST BE PLACED HERE.





Ex 574



Ex 576



Ex 571



Spanish Civil War - Extensive collection



506



544



209



336



346



347



428



146



320



566



586



439



Ex 373



332



204



568



144



234



55



213



438



437



130



308



432



210



Ex 498



460



126



501



554



445



242



330



327



322



346



340



337



339



496



457



453



452



454



244

ARRANGEMENT FOR SALE 367

Tuesday 28th March 2023

- | | |
|--|---------------|
| (1) Postage Stamps of the World - Collections & Mixed lots | Lots 1 - 65 |
| (2) Omnibus, Revenues & Cinderellas & Thematics, Postal History. | Lots 66 - 95 |
| (3) Postage Stamps Classified by Country of Origin | Lots 96 - 621 |

Lot Images can be found at www.stampgroup.net

Customers wishing to leave and collect their lots may do so at any time

Viewing by appointment only at the office or

At the **NEW VENUE Bowdon Rooms** on the day of sale from 9.30am til 1.15pm

Auction to start at 2pm

MIXED LOTS

- 1 Accumulation in a carton good range includes mint blocks from various countries in two large sheet folders, Switzerland 2007 yearbook (STC £120), Br. C/Wealth commercial covers from 1950s-60s and foreign, mainstream in small stockbooks, modern Australia in 22 ring binder, BWI mint thematics in stockbook etc, 1000s.
£ 40
- 2 Accumulation in a carton with plenty to sort in albums, stockbinders and loose, noted thematics in binder on stockpages, Malta GVI in stockbook, old time Pelham album, Spain useful 1940s incl local stamps, world in large stockbooks incl few China, Germany Berlin empty Davo printed album, old time springback etc, 100s, heavy lot.
£ 55
- 3 Accumulation in a carton with plenty to sort in albums, stockbinders and loose, noted Tristan Da Cunha QEII collection STC £745 with few nice covers, St Helena colln in springback for QEII issues, booklets etc, USA in Scott printed album middle to modern (heavy), world in a springback incl thematics, 1953 Coronation omnibus mint in special binder, Sierra Leone incl better in stockbook etc, 100s, heavy lot.
£ 200
- 4 Accumulation in a carton with plenty to sort in stockbooks with better seen including South Africa in large stockbook from GV onwards, Great Britain QV incl 1870 ½d bantams (c60), Br. Levant incl 180pi on 10s seahorse mint, New Zealand in a well filled 64 sided stockbook from QV Chalon perf issues. Seven large and small stockbooks. 1000s.
£ 200
- 5 Accumulation in an moving box with worldwide ranges noted thematics in stockbook, GB in two volumes, Plymouth peg album in green, Hong Kong incl defins to \$50, Ceylon mint and used on leaves, off paper world in a large tin, old time ledger pages with classics worldwide stuck to the pages incl Br. C/W QV, India 1854 4a cts, Bulgaria postage dues, earlier in a stockbook etc. 100s.
£ 100
- 6 Accumulation in carton with more interesting to sort including well filled springback binder strength in Portugal & Rumania, small box with Br. Commonwealth on stockcards and in packets, few covers, St Helena modern collection fine used in ring binder and slipcase, 1946 Victory fine used sets, Brunei, Mauritius, Gibraltar in folder etc, 100s, intr sorter.
£ 85
- 7 Aden to Austria - all periods mint and used collection in well filled springback album, very mixed includes country sections for Algeria, Andorra, Angola, Antigua, Argentina, Australia incl GV Roos to 5s, with dozens of defins and commems, Austria defins and commems etc, large qty mostly all different.
£ 80
- 8 Azerbaijan to Botswana. - all periods mint and used collection in well filled springback album, very mixed includes country sections for Bahamas, Barbados, Belgian Congo, Belgium, Bermuda, Bolivia etc, large qty mostly all different.
£ 75
- 9 Box of GB and world kiloware; approx 7kg in a large carton
£ 20
- 10 BOX with a worldwide accumulation incl USA mint and used in stockbook, Switzerland presentation sheets, Yemen an extensive duplicated stock for 1960s commems in complete unmounted mint sheets incl thematics Football, Space, Flowers. Different countries sorted on album leaves in bags, etc, 1000s.
£ 45

- 11** Brazil to Cayman Is. - all periods mint and used collection in well filled springback album, very mixed includes country sections for Brazil to 500r, Cape of Good Hope 6d lilac triangle, Canada, Burma, Bulgaria, Morocco Agencies incl 1941 censor cvr Tangier to London, Br. P.O. in China to \$1, Br. Honduras etc, large qty mostly all different. **£ 75**
- 12** British Africa duplicated mint and used collection of early to modern issues including Rhodesia 1892 arms to 2/6, 1892 bicolours to 4s, 1898 to £2, 1910-13 Double heads to 7s6d (perfined 13.9.11), Northern & Southern Rhodesia, GV to 2/6, GVI to 10s, SWA useful ranges incl officials mint, 1949 UPU 3d pair cto one showing serif on C variety (Cat £48), 1932 1st flight England to S.Africa, many 100s, very mixed but huge cat value STC £6800+. **£ 680**
- 13** British Commonwealth accumulation in carton with more interesting to sort including Australia GV Roos to 2s brown, GV heads etc in auction in folder, Australia in stockbook incl Roos 5s & 10s (C of A wmk), Samoa GV mint, Bahamas on leaves, India GVI to 25r used, some loose, in packets, Jamaica in group of postmarks QV onwards, Bahrain & Kuwait ovpts on GB in stockbook, 1946 Victory mint sets, loose on stockcards, packets, Canada bundleware etc, 100s, intr sorter. **£ 85**
- 14** British Commonwealth: Accumulation in stockbooks and on leaves in a box including Canada, Gibraltar, Montserrat, Australia, NZ, strength in modern, 100s. **£ 50**
- 15** British Commonwealth collection in an Ideal printed album Vol II from 1915 (smaller album) quite well filled mint and used noted GB, India, Canada, 100s, ideal for expansion. **£ 75**
- 16** British Commonwealth collection in two 22 ring albums, all periods mint & used including countries K to Z noted Montserrat QV to 1949 UPU, Mauritius incl GVI to R2.50, Malta incl 1922 mint blks of 4 low values, KUT GVI to 50c mint, 3s used, GV to 2s mint, second volume S countries noted Sarawak to \$2, St Vincent GVI to 5s, St Lucia QV onwards, St Helena etc, 100s. **£ 150**
- 17** British Commonwealth collection of country sections in nine large stockbooks, all periods mainly QV to modern mint and used, noted Tanganyika GV to 3s used, Zanzibar mint with duplicated values for different printings 1896 to 5a, 1899 to 8a, 1921-26 to 75c, 1936 to 50c, 1s (4), 2s (2), 1935 SJ set mint, 1948 RSW set mint (2), 1949 UPU set m, 1960s ovpts, SWA, Trinidad & Tobago QV to 1s mint, GV to 1s, 1935 SJ set both m & u, 1938 to \$1.20, 1948 RSW set mint, QEII to \$4.80 mint, Br. Virgin Is., St Kitts-Nevis QV onwards, St Lucia QV onwards Br. Somaliland QV to 1r mint, GVI to R5 mint, 1948 RSW set m, Turks & Caicos Is. mint to £1 etc, etc, attractive range with useful pickings throughout, 100s. **£ 300**
- 18** British Commonwealth collection of country sections in seven WH Smith stockbooks, all periods mainly modern mint and used, noted Samoa, Sudan, Zambia, Grenadines of St Vincent with many nice thematic mint sets, Zimbabwe, Tristan Da Cunha 2000 Monarchs set to £5 U/M (Cat £40), Tonga from 1940s mint, etc, attractive range, 100s. **£ 85**
- 19** British Commonwealth collection on old time slightly jumbled leaves, very mixed but odd better including GB QV 1887 4½d mint blks of 4, 1883 to 5s used, Gibraltar from QV, Fiji EDVII 1s mint, GV to 2/6, GVI to 2/6, Indian states Gwalior QV 5r CDS used, Patiala QV to 12a mint & used, EDVII to 1r m & u, KUT incl GV 4r, 5r & 10r fiscal used (faults), India, Jamaica GVI to 10s used, etc, 100s. **£ 100**
- 20** British Commonwealth collection on old time slightly jumbled leaves, very mixed for countries Aden to Dominica odd better including Ascension GVI to 2/6 mint, Australia incl Lady Gowrie Red Cross label, Barbados, Bermuda, Solomon Is., Burma, Canada, Cape of Good Hope, Cayman Is., Ceylon, Cyprus etc, 100s. **£ 125**
- 21** British Commonwealth Collections in two SG printed loose-leaf ring albums with good mint New Zealand 1950s-70s with odd better incl Health M/S, Barbados 1940s to 1960s sparse but odd better, vals to 5s etc, clean lot ideal for expansion. **£ 45**
- 22** British Commonwealth - four albums and stockbooks with a early to modern ranges of mint and used including old time springback with Australia & New Zealand mint sets and ranges, Hong Kong used duplicated defins and commems, C/W & Foreign in a well filled binder on stockpages, large qty, 100s. **£ 120**
- 23** British Commonwealth in four albums / stockbooks with better including Ascension modern mint sets, Australia middle to modern, Kenya used sets, Kiribati used sets, Malayan states, Channel Islands, Jamaica with vals to £1, stockbook with varied assembly incl Br. Africa m & u, Palestine mint to 50m, Basutoland GV to 1s mint, Cyprus 1938 2pi m blk of 4, S. Rhodesia m & u, Canada, CGH Revenues, N. Borneo to 24c, 18c mint, Norfolk Is. sets, N. Nigeria mint, **£ 100**
- 24** British Commonwealth jumbled assembly on various stockcards of QV-GV issues for a wide range of different countries in mixed condition mostly better incl Cape Triangle 4d blue, Malta, Gibraltar, Cyprus incl GV to 45pi, QV to 2pi, KUT 1922 10s & £1 fiscal used, Bermuda, Falkland Is QV 2½d blue with F1 cancel, 1s bistre (2), GV Whale & Penguin 2/6 & 5s mint, Leeward Is. EDVII 1s mint, GV 5s mint, NZ Victory set m, Bahamas incl 3s Staircase used, Fiji 1938 to 2/6 mint, Grenada QV defins to 6d, Gambia EDVII mint 1/6, 2/6 (both), Malaya states Sungei Ujong (3 diff types on 2c rose), Br. Levant EDVII 24pi on 5s mint, Nigeria GV 10s mint, Canada QV 20c vermilion (2) & 50c blue (3), 1897 Jubilee to 50c m & u, 1908 Quebec set unused or used, Hong Kong QV 14c on 30c, 10c on 16c & 28c on 30c used, 1891 Forged Jubilee ovpt etc, useful assembly, approx 250. **£ 300**

- 25** British Commonwealth King George Sixth printed album in red with a mint rather sparse collection with a few higher values incl HK to \$1, Solomon Is. to 10s etc, few 100, ideal for expansion. **£ 300**
- 26** British Commonwealth middle period to modern mainly unmounted mint accum in ten large stockbooks with good ranges of British Africa, Solomon Is., Gambia incl 1966 Birds set to £1, Malta, Mauritius, Montserrat, Malaya, Pitcairn Is. with better defin sets and useful duplication, 1948-49 RSW etc, 100s. **£ 450**
- 27** British Commonwealth small accumulation in boxfile with useful pickings on stockcards, album pages, packets and loose, noted Hong Kong incl P.O. in China, India 1946 Victory set in mint blks of 4, Ceylon QV, BAT mint, etc, 100s, interesting sorter. **£ 85**
- 28** British Empire: Old time collection incl South Africa 1910 onwards mint and used good mainstream plus 1938 Voortrekker low val mint pairs, 1939 Huguenot set 3 mint plus extra 1½d pair, 1941-46 War Effort large values mint to 1s in vertical pairs, 1942 War Effort small sizes set 8 mint, Sudan 1894 low vals mint & used, Arab Postmen to 10pi, 1924-40 to 50pi, 1938 3p on 3½p mint (Cat £55), officials, Swaziland 1938 to 5s m & u, etc. Useful unpicker as found. **£ 75**
- 29** Carton containing an eclectic mix of stamps and covers in stockbooks, stockcards/sheets, boxes and loose in small packets with strength in Germany covers (approx 150, early to third Reich), early GB with Penny Reds, QV & Ed VII dupl. vals to 1/-, modern Europe u/m, etc... Well worth a look **£ 70**
- 30** CARTON with a worldwide accumulation as it comes including Barbuda mint sets in stockbook, Barbados modern sets U/M & f.u. in stockbook, St Kitts-Nevis sparse s/b, 1992 Olympics Westminster mint collection in special binder, Yemen thematics in two springback albums incl 1949 UPU imperf proof, History of WWII Westminster coin covers incl Jersey £1 note, \$5 Barbados, £5 Gibraltar, £2 coins etc, **£ 65**
- 31** Central Africa to Cyprus - all periods mint and used collection in well filled springback album, very mixed includes country sections for Ceylon, Chamba, Chile, Colombia, Congo, Costa Rica, Cuba, Cyprus from QV onwards etc, large qty mostly all different. **£ 50**
- 32** COLLECTOR'S CLEAROUT - Mainly commoner GB duplicated in stockbooks and binders with 1000s defins and commems, thematics in mint and cto sheets and blocks, loose, envelopes, covers etc, in nine heavy boxes. **£ 25**
- 33** COLLECTOR'S CLEAROUT - Mainly GB duplicated in over 25 stockbooks and binders with 1000s defins and commems, Royalty album etc, in four heavy boxes. **£ 10**
- 34** Czech Rep. to Egypt. - all periods mint and used collection in well filled springback album, very mixed includes country sections for Czechoslovakia, Danzig, Denmark, Dominica, Ecuador, Egypt (many commems) etc, large qty mostly all different. **£ 60**
- 35** DAVO ALBUMS - Collection in eight albums both mint and each by country including Netherlands, modern self-adhesives 1989-1999 incl M/S, modern issues, Neth. Antilles, Germany East & West, Zones, etc. 100s. **£ 230**
- 36** El Salvador to Funchal - all periods mint and used collection in well filled springback album, very mixed includes country sections for France and Colonies, Fiume incl 1921 provisional postage set, Finland, Fiji, FMS, El Salvador etc, large qty mostly all different. **£ 75**
- 37** Gabon to Hoi Hao. - all periods mint and used collection in well filled springback album, very mixed includes country sections for Gambia, Ghana many commems, Gibraltar, Greece, Grenada, Guadeloupe, Guatemala, Gwalior, Haiti, etc, large qty mostly all different. **£ 85**
- 38** Heavy carton of all world in stockbooks, leaves. Includes Czech, India, Germany, USA, Lighthouse album with slipcase (few Australia inside). Nice mix of world material 1000's. **£ 30**
- 39** Honduras to Israel - all periods mint and used collection in well filled springback album, very mixed includes country sections for Hong Kong 1863 96c brownish black f.u. (Cat £65), 1880 surcharges 5c on 8c (Cat £120), 5c on 18c (Cat £75), 10c on 12c (Cat £55), 10c on 16c yellow (Cat £160), 10c on 24c green (Cat £110), 1880 48c brown (Cat £120), couple of treaty port cancels, GV to \$5 used with Chefoo CDS, Hungary, Iceland, India 1854 1a red, Indo-china, etc, large qty mostly all different. **£ 275**
- 40** Indore to Italy - all periods mint and used collection in well filled springback album, very mixed includes country sections for Persia from 1870s and vals to 50k, Iran, Iraq, Ireland Italy early to 5l, many defins and commems etc, large qty mostly all different. **£ 65**
- 41** Ivory Coast to Latvia - all periods mint and used collection in well filled springback album, very mixed includes country sections for Korea, KUT GVI to £1 used, Japan incl many defins and commems all periods 1949 Postal Week mint, plus P.O. in China, Jamaica etc, large qty mostly all different. **£ 85**
- 42** Large carton containing a useful looking world accumulation from a retired collector in many stockbooks, loose, etc... with an emphasis on British Commonwealth. Excellent sorter lot and unchecked by us so the possibility of varieties, shades, perf types, etc... Needs viewing! **£ 60**
- 43** Large carton containing a useful looking world accumulation from a retired collector in many stockbooks, loose, etc... with an emphasis on British Commonwealth. Excellent sorter lot and unchecked by us so the possibility of varieties, shades, perf types, etc... Needs viewing! **£ 60**

- 44** Large carton containing a useful looking world accumulation from a retired collector in many stockbooks, loose, etc... with an emphasis on British Commonwealth. Excellent sorter lot and unchecked by us so the possibility of varieties, shades, perf types, etc... Needs viewing!
£ 60
- 45** Large carton containing a useful looking world accumulation from a retired collector in many stockbooks, loose, etc... with an emphasis on British Commonwealth. Excellent sorter lot and unchecked by us so the possibility of varieties, shades, perf types, etc... Needs viewing!
£ 60
- 46** Large carton containing an 'all world pot pourri' including a useful looking mix in a boxfile, in stockbooks, approval books, tin of loose France & Colonies, Burma & Kuwait commercial covers, UV lamps(2), bundle of used black stocksheets, etc, etc,... Well worth a look £ 60
- 47** LARGE CARTON with plenty to go through including Austria fine used commems in well filled album binder, USA incl mint 1960s blocks, Greenland booklets and Scandinavia M/S u/m, Royalty FDCs from good range of countries in bundles, Jersey mint colln in Lindner hingeless album. Diverse mix.
£ 50
- 48** Lebanon to Mauritius - all periods mint and used collection in well filled springback album, very mixed includes country sections for Liechtenstein, Luxembourg, Madagascar, Straits Sett., Malaysia, Maldive Is., Malta, Martinique, Mauritius QV onwards etc, large qty mostly all different.
£ 85
- 49** Mexico to Netherland Indies - all periods mint and used collection in well filled springback album, very mixed includes country sections for Mexico defins and commems, Monaco vals to 10f, airs, Montserrat, Morocco, Nepal, Negri Sembilan, Netherlands, Neth. Indies etc, large qty mostly all different.
£ 85
- 50** New Caledonia to Papua & New Guinea - all periods mint and used collection in well filled springback album, very mixed includes country sections for New Caledonia, Newfoundland, New Zealand incl few Adsons, Nicaragua, Nigeria, North Borneo, N. Rhodesia, Norway, Nyasaland incl GV 2/6 used, Pakistan, Palestine, etc, large qty mostly all different.
£ 100
- 51** OLD TIME MIX - In a smaller box with a diverse range of material incl worldwide covers, revenues and loose in a tin, various loose on stockcards, packets, leaves incl France three Epreuve de luxe Art issues, old France commems duplicated in bag, Australia GV Heads arrange on cards incl OS officials, India P/S envelopes bundles, etc, 100s. Interesting sorter.
£ 75
- 52** OLD TIME Ranges in three small albums / exercise book with 19th century mint and used for foreign countries, two small Stewart albums one with Br. Empire incl HK GV to \$2, GB 1883 5s, EDVII to 1s, small qty.
£ 26
- 53** OLD TIME springback with Br. Empire & foreign mint and used ranges incl Gibraltar GVI to 1s mint, France & Colonies, Egypt, useful early Ceylon, Australia GV Roos to 2s brown, small qty.
£ 36
- 54** Paraguay to French Polynesia - all periods mint and used collection in well filled springback album, very mixed includes country sections for Patiala, Penang, Perak, Peru, Philippines, Poland, etc, large qty mostly all different.
£ 75
- 55** Propaganda Forgeries: Liquidation of Empire St Lucia & Singapore vertical setenant gutter pairs for five George Sixth values ½d, 1d, 1½d, 2d & 2½d on wavy line watermarked paper, all unused except 1½d which has violet CDS's, very fine group of five pairs, Michel 9 IV a / 13IV a, & 9 IVb / 13 IV b. Cat €1400. Only 400 sets made, very scarce in setenant pairs.
£ 650
- 56** Russia to Saudi Arabia - all periods mint and used collection in well filled springback album, very mixed includes country sections for Russia early to modern with dozens of defins and commems, St Helena, St Lucia, St Vincent, Samoa, Sarawak, Sardinia etc, large qty mostly all different.
£ 85
- 57** Selangor to Spain - all periods mint and used collection in well filled springback album, very mixed includes country sections for Selangor to \$5, Seychelles, Sierra Leone, Singapore GVI to \$5 used, S. Africa, Spain with dozens of defins and commems etc, large qty mostly all different.
£ 80
- 58** Shoebox containing off paper mix, predominantly modern used Br. Comm. pictorials including a bag of duplicated Hong Kong. Useful lot for the packet maker or approval dealer. Useful little sorter
£ 40
- 59** Spanish Guinea to Syria - all periods mint and used collection in well filled springback album, very mixed includes country sections for Sudan, Swaziland, Sweden many defins and commems, Switzerland incl imperf 1fr grey f.u., many defins and commems, Syria from French issues to modern etc, large qty mostly all different.
£ 80
- 60** STOCKBOOKS & BINDERS in a moving box with a worldwide assembly in various albums and stockbooks including early to modern noted Austria, Argentina, Colombia, West Germany, Br. C/Wealth modern 1970s-80s mint thematic in large stockbook, W/W miniature sheets in large 64 sided stockbook etc, 100s. Very heavy lot. 8 volumes.
£ 150
- 61** Taiwan to Turks & Caicos Is. - all periods mint and used collection in well filled springback album, very mixed includes country sections for Taiwan, Tanganyika, Thailand / Siam (many commems), Togo, Tonga, Transvaal, Travancore, Trinidad & Tobago, Tristan Da Cunha, Tunisia, Turkey etc, large qty mostly all different.
£ 100

62 Upper Volta to Zimbabwe - all periods mint and used collection in well filled springback album, very mixed includes country sections for Uruguay, Vatican City incl 1935 Juridical Conference f.u. (Cat £185), 1936 Catholic Press 75c f.u. (Ca £90), Venezuela, Vietnam, Zanzibar, etc, large qty mostly all different. **£ 130**

63 Very large carton with a world mixture with nice 64pp Lindner stockbook containing collection of GB & Commonwealth, two further stockbooks of similar, four cover albums of FDC,s, GB on hagners & stockbook of train thematics incl. covers. Good clean lot **£ 60**

64 World miscellany in huge pile of folders sorted by country includes better Belgium imperfs to 40c, Switzerland, Hungary, Asia, Bulgaria, Denmark, Italy, Austria, Netherlands, Fr. Cols, France, Germany etc, 1000s. **£ 150**

65 World ranges in three stockbooks with Japan, Australia, NZ, etc. Good clean lot for the general collector. **£ 24**

ACCESSORIES

66 Heavy carton of thirteen secondhand stockbooks ranging from 16pp & 64pp in various condition, but all very useable; plus a brand new boxed Barrington Smith springback album with leaves. (13) **£ 36**

67 NINE EMPTY binders mostly with album leaves or cover / booklet sleeves, high original cost. **£ 10**

68 THREE BOXES of EMPTY binders mostly springback without leaves, 64 sided stockbook, some leaves and old GB catalogues, heavy lot. **£ 10**

CIGARETTE & TRADE CARDS

69 Slot album well filled with nice group of part or complete sets including Churchman's 1937 Howlers (1-30 out of 40), Players 1934 Cricketers set of 50, Coronation Series 1937 set of 50, 1979 Top Dogs, Wills 1930 Household Hints set of 50 (2nd Series), thematic range of Grandee 1970s-80 issues Approx 112 different. **£ 25**

LITERATURE

70 HONG KONG & The Treaty Ports of Asia by F W Webb, original 1961 printing 493pp No.436 of 500 limited printing. Only few marks on the hardback cover and slight bend on top right corner, comes complete with the original Scarcity & Valuation Guide (soft back cover, faults), also numbered 436 that came with the original book. Superb reference. **£ 250**

71 PRAKAIKET INDHUSOPHON Collection of Siam, a superb full colour hard back book 230pp with slipcase as originally printed showing the stamps and covers shown in International Stamp Exhibitions 1981-1989 arranged chronologically in groups. Published in 1989, a must for any Siam collector! Very fine. **£ 40**

72 RYOHEI ISHIKAWA Collection of stamps and postal history of Hong Kong Treaty Ports hardbacked Sotheby's auction catalogue of 1980 sale held at London. A few marks on the outer cover, embossed in gold on green hardback. No prices realised but a superb reference. **£ 40**

73 SG sectional catalogues with useful Br. Comm. incl. Falkland Is.(2012), Hong Kong (2010), Leeward Is. (2012), Malasia & Singapore (2010), Windward Is. & Barbados (2007), Northern Carribean, Bahamas & Bermuda (2006), Indian Ocean (2006)), all in fine condition plus few other foreign incl. Germany, France, Japan, etc, .. Useful lot (12) **£ 24**

OMNIBUS

74 1935 Silver Jubilee collection of mint sets and ranges with good quantity including many useful countries, approx 135 different STC £550. **£ 180**

75 1935 Silver Jubilee collection of used sets and ranges with good quantity including many useful countries, approx 120 different STC £470. **£ 150**

76 1948 Royal Silver Wedding extensively complete fine used collection of 118 stamps, includes many of the key countries Hong Kong, N. Rhodesia, Cyprus, Singapore, very fine. 118 stamps. **£ 1000**

77 1948 Royal Silver Wedding extensively complete unmounted mint collection of 126 stamps, includes all the key countries Hong Kong, N. Rhodesia, Cyprus, Falkland Is., Gibraltar, Singapore, very fine. 126 stamps. **£ 950**

78 1949 Universal Postal Union extensively complete fine used mint collection of 241 stamps, includes huge range of different countries with Hong Kong, Sierra Leone & Pitcairn Is. noted, mainly fine. **£ 150**

79 1949 Universal Postal Union extensively complete unmounted mint collection of 259 stamps, includes huge range of different countries with Hong Kong & Pitcairn Is. noted, mainly fine. **£ 100**

80 1949 UPU: Fiji set on registered airmail cover Suva to Sydney with typed addr, nine examples from the same sender incl some sequential regd numbers. Some gum marks, otherwise pretty. (9). SG 272/5 Cat £16 each set used. **£ 48**

POSTAL HISTORY

81 British Commonwealth: Group of covers QV to QEII in very mixed condition but good range of interesting including Mauritius 1950 GVI combn cvr, 1902 Pretoria censor, 1930 Australia long front only (very damaged) with pen ink drunken sailor and RECEIVED TORN AT GPO MELBOURNE, Sarawak 1957 QEII 13 values on FDC (faults) to \$1, Gibraltar 1936 3d regd env uprated to London, 1966 S. Rhodesia Stamps not valid h/s's, 1949 UK to Mogadishu Italian Somaliland with insufficiently addressed, redirected to Mombasa and UNCLAIMED RLO h/s, 1949 similar cover from BMA Somalia with Military Workshop h/s in violet, BMA Malaya uprated airtletter, 1947 from Taipeng, etc, intr group. (23).

£ 40

82 British Commonwealth: Large bundle of covers and postal stationery cards unused and used QV to QEII good range of material including Br. Guiana P/S cards, Morocco Agencies 1937 Coronation covers used on FDI, Bermuda, Transvaal, group of Cocos Keeling 1962 covers cto with Australian stamps incl 1½d green imprint pairs, Basutoland 1953 used ovptd aerogrammes from Maseru, Canada 1934 flight cvrs (2 diff), Pitcairn 1938 Radio cover (usual water stains), some duplication, intr lot approx 90+.

£ 100

83 British Commonwealth: Unused postal stationery cards useful selection incl OFS VRI ovpt on regd 4d olive P/S env, Sierra Leone QEII 4d brown regd P/S env., S. Africa GV 1d red P/S env., Basutoland QEII 5c on 6d red unused regd P/S env., Br. Guiana 1c grey ship P/S card. Mainly fine. (5).

£ 30

84 Great Britain: Small range of commercial mails some first day incl 1953 Coronation set, 1938 2d orange & 3d violet on plain covers, GVI 2½d blue used FPO 776, 1952 1½d & 2½d (4), 1924 Wembley Australian Pavilion photo PPC, 1940 Cent regd set, 1951 Festival illus., 1950 GVI 4d lt ultr (Cat £40, tones), strength in GV. Mixed with useful pickings. (41).

£ 35

85 SAS 22nd A squadron, Penang - 1954 (7 Jan) DAMAGED BY SEA-WATER boxed h/s in black on stampless Forces Airmail envelope sent by TPR Lees, A Squadron, 22nd Special Air Service Regt, Minden Bries, Penang, Malaya. With SAS printed flap 'Who Dares Wins' green and black monogram. Addressed to UK with I.S. triangle h/s (the black handstamp not recorded in Nierinck) after forwarding from BOAC Flight 781 that crashed at Italy on a flight from Singapore to London which exploded in mid flight due to a mechanical fault. The cover has faults commensurate with a wreck cover, includes sellotape affixed upon salvage. Unusual military env. from the SAS stationed in Penang for the Malayan Emergency (1948-60) to defeat a communist revolt in Malaya supporting 24 infantry battalions in Malaya from a variety of Commonwealth countries. Scarce and possibly unique.

£ 350

86 SPECIMEN Overprints on QV-GV postal stationery cards each overprinted specimen diagonally including East Africa GV 35c regd env., Ceylon EDVII 6c red card, BCA ½d green Arms, 1d arms newspaper wrapper, Leeward Is. QV 1d red newspaper wrapper, 1d pink env., Zululand 1d card, Br. Guiana Ship 1c grey, BEA ½a green, Leeward Is. QV 1d pink env. 1d red card, Sierra Leone ½d green newspaper wrapper, QV ½d green card, 2d grey regd env., EDVII ½d green, mostly fine, nice group of 12 items.

£ 180

POSTCARDS

87 Extensive collection of mainly all different topographical, photo and Greetings PPC's mainly used from 19th century to 1950 both GB & Foreign with interesting groups including postage dues incoming from overseas, GB 1d lilacs with some postmark interest with squared circles, Dublin, Hooded, P/S cut outs used through the mail, Belgium, Germany, France, Cuba, Netherlands, USA incl APO, Spain 1904 military, 1909 GB Imperial Int. Exhib., 1911 Festival Empire Exhibition Crystal Palace flag cancel, postal markings Liable to Letter Rate, Contrary to Regulations, Exceeds limits of size, 1907 Octagonal cancel, 1909 Brierfield skeleton cancel, 1906 Dainties for Luncheons printed card from Ipswich, 1903 EDVII Constantinople CDS, Egypt 1893 Cairo Cigarette advert card, 1903 Spain pro-patria label on obverse, 1914 Nasre PPC from Jerusalem, Greece 1903 multi combination etc, too much to list, Approx 340+.

£ 300

REVENUES & CINDERELLA

88 China: 1955 Anti Tuberculosis seals showing small boy with design printed in blue and red, complete sheet of 50 unused as issued, vertical fold, very fine. (50).

£ 50

89 GB Perfins: Large carton filled to the brim with mostly off paper Wilding's & Machins in Stockbooks, envelopes, packets, boxfile, etc.,...Obvious duplication but a wealth of different dies in evidence with many machins sorted into envelopes by die in alphabetical order that fill two large shoeboxes; also some on cover with Wildings (12) & Machins (30). Very useful lot for the perfin specialist (1,000's)

£ 140

90 REVENUES: 1850's to 1940's Approx 450 Austro-Hungarian Empire & later documents and part documents almost all bearing impressed or adhesive revenues incl. Austria, Hungary & Czechoslovakia (particularly Bohemia & Moravia area) plus other revenues on piece, markings, wax seals & paper cuttings of the period. Duplication in places; poor to fine. Original lot purchased by the vendor in the 1980's

£ 100

91 REVENUES: GB documents in a plastic storage box, chiefly originating from an exploded ledger of stock certificates dated 1918 with red impressed General Duty revenues with many values in evidence and almost all are the difficult Scottish dies. Also a few earlier and later. Fine condition for these and good e bay sellers. Original lot of approx 300 documents.

£ 120

92 Rhodesia: Br. Central Africa 1891 Long Arms 10s green and red fine used (Barefoot 7) & 1893 Long Arms 1s on £1 blue and red (small chunk missing right side Barefoot 13. (2). **£ 75**

THEMATICS

93 CIRCUS: Bertram Mills Circus c1948 group of autographs on paper from performers including the famous Coco The Clown (2 different), "What a very comfortable bed you have, sorry to have missed you, all the best Coco," Togare Lion tamer 1948, Crick & Crook comedy acrobats, Best Wishes from the girls of the Elephant Ballet, Gio de Riaz aeroplane aerial act, Grindl's Elephants, Tovarich Troupe, Frank Foster ringmaster. Interesting group on postcard sized sheets for display. (12). **£ 60**

94 EUROPA - Extensive collection in hingeless printed SAFE album well filled includes key sets 1956 issues (high cat value £100s), 1957 Luxembourg set 3 (Cat £280), Liechtenstein 1960 (Cat £140), appears complete to 1974 (no space for Spanish Andorra). High cat. **£ 200**

95 Stamps on Stamps Hungary extensive mint collection in a well filled SAFE album, dozens of commem sets 1951 to 2001 plus miniature sheets and sheetlets, imperf & perf sets & M/S, mostly Unmounted mint etc, attractive lot approx 320 + c29 M/S. **£ 60**

ADEN

96 1939-48 Complete set of 13 mainly unmounted mint (Cat £130), SG 16/27. **£ 48**

97 1953-63 Mint blocks for various values plus singles includes 20s both types as singles, 2s black and red single, 5s both singles, then range of values 5c to 1s25 in blks of 4 or 6 or 10, includes many shades, mainly fine, STC £345. **£ 65**

98 Balance of an auction lot with duplicated mint and used arranged on stockpage, cards and leaves includes 1939 11 vals to 10r mint (Cat £90+), 1951 10s on 10r mint (Cat £45), 1963 FFH FDC, Seiyun 1942 2r m & u (Cat £45), jumbled assembly. (Approx 200). **£ 48**

99 Stockbook 1937 onwards mint and used with better pickings incl 1937 to 1r mint (Cat £127), 1939 set 13 mint (Cat £130), 1948 RSW set U/M (Cat £40), used R10 CDS (Cat £55), 1951 Surcharge set mint (Cat £90), Kathiri state of Seiyun; 1942 set mint (Cat £70), 1951 set (Cat £55), Quaiti State in Hadhramaut 1942 set (Cat £70), then few S. Arabia issues and Aden 1953 airmail cvr etc, (Approx 330). **£ 225**

AFGHANISTAN

100 Collection in a smaller stockbook with useful mint and used sets and ranges including 1960s sets mint incl Appendix sets, 1961 Unesco M/S imperf (2 diff colours), 1962 United Nations pairs, 1961 UN M/S, colourful little lot, plenty of thematics. (500+). **£ 30**

ALBANIA

101 Three 1923 Covers from the same correspondence Durres to Austria incl 25q blue postal stationery env, 10q red P/S env uprated with two 5q green & large block of 15 2q orange on reverse, 25q blue P/S env uprated with five BESA ovpts on 10q red Eagle definitives, each with red RAUL VINAY DURAZZO ALBANIE h/s in top left corner. Few faults otherwise seldom seen. **£ 85**

ALGERIA

102 1927 Wounded Soldiers of Moroccan War surcharge set of 13 to 5f+5f hinged mint, nice set, SG 72/84. Cat £120. **£ 40**

ANTIGUA

103 1876 6d blue-green Perf 14 unused no gum with variety WATERMARK INVERTED. Couple of toned perfs otherwise sound. SG does not price this as mint but as used £140. SG18w **£ 200**

ARGENTINA

104 1859-62 Buenos Aires 4R green, 1 Peso blue and 2 Pesos red SPIRO forgeries in COMPLETE SHEETS OF 25 with usual dotted square cancels. Some peripheral toning to edges of sheets actually adds to the superb appearance of these items. Would display very well (3 sheets) **£ 150**

ASCENSION

105 1922 3s black and violet very fine used part cds, sound stamp, SG 8. **£ 65**

106 1922 Complete set of 9 to 3s mounted mint, 2s has toned gum, 3s very fine attractive set, SG 1/9. **£ 85**

107 1924-33 1d grey black and deep blue green, re enforced pair mounted mint, with right hand stamp showing torn flag variety SG11b. **£ 60**

108 1924-33 3d blue mounted mint pair with right hand stamp showing torn flag variety, SG14b. **£ 80**

109 1924-33 Complete set of 12 fine mint from the 1an half to 3s, top values are sound, SG10/20. **£ 135**

110 1927 Badge of St Helena 5d purple and olive-green fine used neat 12 OC 27 regd oval showing broken main mast variety, very fine, SG 15d da. **£ 160**

111 1934-1993 Collection of mint, used and QEII unmounted mint sets in a nice KA-BE album, 1922 vals to 3d mint, 1924 6 vals to 1s mint, 1934 GV set of 10 used (Cat £120), 1935 SJ set f.u. (Cat £110) & set mint (Cat £55), 1948 RSW set mint (Cat £50), 1938 GVI set to 10s mint (Cat £275), plus mint to 5s, then fine used to 1s, 1956 set mint (Cat £150), 1963 Birds set (Cat £60), 1986 Ships set to £1, 1991 Fishes set to £2.50, 1996 Birds set includes overall large amount of completion includes miniature sheets etc, good catalogued lot. **£ 375**

112 Stockbook 1922 onwards mint and used with better pickings incl 1935 SJ set mint (Cat £55), 1938 GVI 11 vals to 2/6 mint (Cat £60+), 1948 RSW set mint (Cat £55), 1986 Ships long set, 1996 Birds set U/M (Cat £40), 2003 Ariane Space set & M/S, etc, (Approx). **£ 75**

AUSTRALIA

113 1926 1½d scarlet part slogan cancel used showing no middle bar in E of PENCE variety, mainly fine, SG 87 var. **£ 40**

114 1931-36 SPECIMEN overprint on Roo top values 10s, £1 & £2 hinged mint, few light tones on £1 & £2, otherwise fine, SG 136s/138s. **£ 30**

115 1938 (20 Jan) Tatty cover to Singapore bearing 2d red with three Poster labels affixed on reverse and tied by machine mark for Australia's 150th Anniversary Celebrations, three different with map and flag, Kangaroo, Koala Bear. **£ 15**

116 1954 Antarctica Expedition label in green depicting plane over Antarctica to commemorate Australia first serious presence in Antarctica, complete sheet of 20 perf and mint, couple tones at right otherwise nice album sized pane. **£ 20**

117 AND STATES: Balance of ex auction lots with mint and used arranged on stockcards and leaves includes Australia Roos Narrow Crown 2d grey mint with inv wmk (closed tear), GV Heads officials OS perfin to 5d, 1920s mint incl identified flaws 1926 1d green in imprint bottom margin MULLETT pair, Tasmania Chalon head imperfs 2d, 4d (2), perf to 1s, Tasmania Views duplicated incl few nice postmarks, Victoria mint to 2s, 3s Stamp Duty mint (pin hole), Postage Dues to 5a mainly used, Victoria on old printed leaves incl 1854 1d dull rose-red f.u. (Cat £90), many defins for 1860s-70s, etc, jumbled and very mixed assembly. **£ 200**

118 Collection in SG Printed loose-leaf album with odd better noted in 1932 Sydney Harbour Bridge 5s top value f.u. with closed tear (SG 143 Cat £225), Roos for different printings to 2s brown and 5s, GV Heads in values to 1/4d, 100s. **£ 100**

119 Officials: OS or OS NSW perfined collection on various album pages includes GV Roos for values to 1s, GV Head defins mint and mostly used to 4d plus different perfin letters incl VG, G NSW (many GVI periods), Sturt 1½d m & u, NSW defins nice used assembly of OS to 1s, Queensland, Western Australia, OS NSW to 1s, A perfin incl inverted, S. Australia SA perfin to 10d, modern OHMS airletter with Specimen ovpt in violet, QEII defins and commems, then a few mint coil pairs etc. Approx 195. **£ 200**

120 Patent Revenue: 1953 6/8 dark green and red neatly cancelled boxed violet datestamp on paper, fine, Barefoot 3. Very scarce value. **£ 125**

121 Patent Revenue: 1978 \$100 green and grey in an impressive block of 4 off paper, very fine, blue boxed datestamps, fine, Barefoot 56. Scarce multiple. **£ 200**

122 Patent Revenue: 1978 Ten different values on paper from \$1, \$2, \$3, \$5, \$10, \$20, \$40, \$50, \$60 & \$100 neatly cancelled boxed black datestamps, fine, Barefoot 40/2, 44, 46, 50, 52, 54, 56. **£ 160**

AUSTRALIAN STATES

123 New South Wales: 1856 (6d) vermilion and Prussian blue fine used neatly cut square with neat 68 numeral cancel, nice four margins. SG 102. **£ 40**

124 New South Wales: 1856 Wmk 3, 3d dull green neatly cut with smallest of three margins part original gum with hinge remains, touching into on left side, about 50% gum, minor thinning otherwise sound, SG range 117 Cat £1900. **£ 200**

125 New South Wales: Officials; 1879 P.13 4d red-brown mint part original gum with hinge remains, left wing margin with gum missing on wing side, very fine and fresh appearance, SG O6. **£ 32**

126 New South Wales: Officials; 1881 P.10 3d dull green mint part original gum with hinge remains, very fine and fresh appearance, SG O5a. **£ 48**

127 Victoria: 1854 2d brownish purple in an attractive PAIR with massive margins all round, two neat oval cancels, scissor cut in-between but does not detract, nice multiple, SG 19. **£ 28**

AUSTRIA

128 1857 Type III Machine made paper 10c black neatly four good to large margins and MILANO 9 / 3 CDS cancel, no faults, accompanied by MATL 1977 Certificate and expertised same on reverse. Fine. SG 6b Cat £250. **£ 150**

129 1858-80 Classics assembly on album leaves with single used examples (mainly fine) and six covers including 1858 Entire Trieste to Zara with 15kr blue tied TRIEST cancel and single line ZARA receiving b/s, 15kr blue on cvr Prague to Vienna, 1861 2k yellow on E.L Vienna to Feltre, 1866 5k red ROVIGNO to Trieste, then 26 stamps from the period incl 2k yellow f.u., 3kr green f.u., 1867 to 50kr f.u.. Useful and attractive assembly. **£ 85**

130 1883-190 P.10½ Line 20k greenish grey fine used beat PRAG CDS cancel, very fine, SG 74d Cat £450. **£ 150**

131 Austro-Hungarian Military Post: Serbia; 1916 set of 21 fine mint & 1916 overprint set 21 fine mint, both good clean sets. SG 1/42. Cat £317. **£ 110**

132 Post Offices in Turkey: 1871 Entire Letter Constantinople to Switzerland bearing 5s red and two 10s blue (one cut along the bottom perfs) tied CONSTANTINOPEL CDS's, sent via Trieste. Some white aging marks from pen writing with Trieste oval transit and BRUGG arrival CDS on reverse. 5s red very scarce on cover (US\$1000+). **£ 250**

133 Postal History: 1839 Entire from Vienna to London with various markings including large crowned H/S in red which has been erased by manuscript; also fancy 'Franco' H/S in red, L.A. in black, Wien/SADE H/S in red and London B/S in black. Clean item in good condition **£ 40**

134 Postal History: 1855 cover from Prague to Belgium bearing imperf 6kr brown & 9kr blue both tied with boxed PRAG cancels and additional manuscript charge mark. Few faults and creases but still a scarce and attractive double franking that would display well **£ 200**

AUSTRIA - TERRITORIES

135 Offices in Turkish Empire: 1867 Soldi values mainly fine used incl 3s green, 5s red (2 shades), 10s blue (2), 15s brown (2 shades), 25s violet CDS, 25s grey-violet mint (Scott \$120), 50s p.12 used (Scott \$110), p.10 50s m & u (Scott \$65), nice selection. (12). **£ 48**

136 Post offices in Turkish Empire: French Currency; 1904 2f grey-lilac attractive fine used example with decent CANEA 1907 CDS cancel of Crete. SG F6 Cat £550. **£ 180**

BAHAMAS

137 1883 Four Pence on 6d deep violet very fine example complete with 1979 RPS certificate stating used, no traces of postmark and some original gum, so nice looking example. SG 45 Cat £400 used. **£ 125**

138 1919 3d black and brown right marginal mint showing watermark inverted variety, very fine, SG 105w. **£ 36**

139 1919 3d black and brown right unmounted mint showing watermark inverted variety, very fine, SG 105w. **£ 45**

140 1938-52 George VI complete set of 17 (SG 149/157a) plus extra shades of 1/- and 5/-(2) and 3d overprint; chiefly hinged mint but £1 and one 5/- are unmounted mint (21) **£ 90**

141 1942 Landing of Columbus complete set of 14 on airmail cover tied with cds postmarks (SG 162/75a), plus 8 vals to £1 hinged/unmounted mint (£1 no gum). **£ 70**

142 Stockbook QV onwards mint and used with better pickings incl QV 1884 to 6d m & u, 1918 GV War Tax & War Charity issues mint incl 3d wmk inverted mint (SG 105w, Cat £90), 1931-36 2s & 3s mint, 1935 SJ set f.u., extensive GVI 1938 and Columbus optv set to 5s, 1948 RSW set U/M, 1960s sets and ranges with vals to £1 m & u, QEII to 1980s U/M etc. (Approx 350). **£ 75**

143 Stockbook QV onwards mint and used with better pickings incl QV 1865 1d blue unused, 1872 Wmk CC 1s green f.u., 1935 SJ set mint, 1948 RSW set mint, 1953 set 12 mint (Cat £100), 1969 set 6 to \$5 mint (Cat £40), Butterflies to \$2, 2000 Wildlife U/M, (Approx 300+). **£ 100**

BARBADOS

144 Propaganda Forgeries: Liquidation of Empire Barbados overprints on set of six George Sixth design in marginal singles on wavy line watermarked paper, very fine set of 6, Michel 9 IV c / 14IV c. Cat €800. **£ 375**

BECHUANALAND

145 Revenues: 1906 Transvaal Revenue EDVII £1 green & black affixed to small piece cancelled 18/7/06 in red and black initials, scarce pair, Barefoot 17. **£ 200**

BELGIAN CONGO

146 1887 Independent State of Congo: King Leopold II 5 francs lilac some gum with hinge residue, SG 11. **£ 275**

BELGIUM

147 1850-78 Classics assembly on album leaves with single used examples (mainly fine) and six covers including 1850 E.L. bearing 20c blue (Rated \$125), 1856 20c blue x 2 singles to Bordeaux, 1858 40c carmine-rose on E.L. (Rated \$160), 1878 perf 20c blue on E.L., 1870 E.L. to Genova bearing 40c red tied '12' dotted diamond (Rated \$110), then 36 stamps from the period incl 1851-54 40c carmine-rose (\$110, three margins), 1861 imperf to 40c incl 1c green CDS used (\$125), 40c (\$150), 1863 perf issues from 1c green to 40c1865-66 1f violet. Useful and attractive assembly. **£ 275**

148 1957 Belgian Antarctic Expedition unmounted mint miniature sheet, very fine, SG MS 1620 Cat £225. **£ 75**

149 DAVO Printed well filled album of mint and used from 19th century to 1969 with dozens of defins and commems, noted 1849 20c (2), 1851 40c (2), 1858 to 40c, 1914 Red X set 3 m & u, 1931 Albert I 5f green mint, plus huge range of commem sets, part sets, ideal for expansion, 100s. **£ 100**

BERMUDA

150 1875 1d on 1/- green fine mint with good part og. Dealers expertising mark on reverse. Very nice example SG 17 Cat £500. **£ 120**

151 1918-20 Keyplates 2/- purple and blue with 'break in scroll variety with couple of nibbled perfs and 5/- deep green and deep red both fine mint, and fresh looking SG 51bbb & 53 Cat £350. **£ 120**

152 1938 Keyplates 2/- to 10/- Perf 14 hinged mint (2/6d is u/m) chiefly with brownish gum. Fine little group SG 116/19 Cat £780. **£ 220**

153 QV-1950 Mint and used collection on KA-BE album leaves, large amount of completion includes 1935 SJ set f.u., 1938-53 GVI Keyplates identified fine used incl SG SG 118b, 119c, 118e, 118f, 1922-34 Ship different printings to 1s mint, 1936-47 to 1/6d mint, 1938-52 pictorials 1s incl shades, good catalogued lot. **£ 150**

154 SPECIMEN Overprints on four Queen Victoria and five GV postal stationery cards and registered envelopes, three GVI cards & regd env. Includes QV 1d red reply paid card printed Specimen diagonally on both parts (2), 1d red card, QV Registered 2d grey small size P/S env. (2), Dry Dock Shipyard ½d green & 1d red cards, George V ½d green and 1d red (2) single cards, 2d blue registered envelopes with SPECIMEN diagonally on obverse (2), GVI ½d green, 1d red single cards & 3d blue regd env. Nice group of items. **£ 110**

155 SPECIMEN Overprints on three postal stationery registered envelopes, incl QV 2d grey, GV 2d blue & 3d blue with SPECIMEN diagonally on obverse, fine. **£ 40**

156 SPECIMEN Overprints on two QV 1d red postal stationery cards, each card overprinted SPECIMEN diagonally on obverse, fine. (2). **£ 30**

BOSNIA & HERZ.

157 Collection on printed leaves with useful mint and used including Austro-Hungarian Military Post 1879 ½k black used (Cat £50), test set to 25k used, 1900 20h pink used, 1906 to 5k m & u, plus set mint (Cat £60), 1912 3k mint, Postage Dues sets m & u incl 1916 3k blue mint (Cat £35), 40h red used (Cat £36), useful lot. **£ 150**

BRAZIL

158 1850-54 Four margin imperfs fine used range for 30r black, 60r black, 90r black, 10r blue unused and used, 180r black. Nice little group. **£ 28**

BRITISH GUIANA

159 Balance of ex auction lots with mint and used arranged on stockcards and leaves includes 1860s 1c to 24c with some shades used, 1899 TWO CENTS on 5c in mint pairs (4), and a unused blk of 12 (wrinkles small part o.g.), 1949 UPU FDC, 1938 to \$3 used, 1890 set 4 mint etc, jumbled and very mixed assembly. **£ 100**

160 SPECIMEN Overprints on four postal stationery cards and envelopes. Includes Ship 1c grey, embossed envelopes octagonal design 2c red, 5c grey, GV 2c brown newspaper wrapper, each with SPECIMEN diagonally across the centre in black. Nice group of 4 Specimen items. **£ 48**

161 SPECIMEN Overprints on twelve postal stationery cards and envelopes. Includes Ship 1c grey & 2c red single cards, 2c red reply card, 3c with perfined Specimen diagonally across the stamp, embossed envelopes octagonal design 1c green, 2c red, 5c grey, GV 2c brown newspaper wrapper, 3c Gold Mining env, GVI 1c green pictorial card, 2c waterfall env (tones), 6c blue registered P/S env each with SPECIMEN diagonally across the centre in black. Nice group of 12 Specimen items. **£ 160**

BRITISH HONDURAS

162 Balance of an auction lot with mint and used arranged on stockcards and leaves includes 1907 25c & 50c mint (Cat £52), 1872 4d mauve used (4), 1888-91 to 20c on 6d yellow used, 1891 to 10c, 1872-87 1d blue, 4d mauve, 1891 surcharges incl 15c on 6c on 3d mint, commems to 1970s mint, jumbled assembly. **£ 80**

163 Balance of ex auction lot with mint and used arranged on leaves includes 1865 1d pale blue mint o.g. with short corner (Cat £70), 1s green used (trimmed perfs cat £140), 1872 1d blue unused, 6d rose f.u. (Cat £60), 1s green (2 shades used Cat £83), 1882 1d blue (4 used cat £35 each), 1d rose used (2), 4d mauve used (3), 1891 vals to 50c mint (Cat £235), 1891 surcharges mint (8), 188-91 surchs to 10c on 4d mint, 1888 bisect pair with normal on paper used, etc, jumbled and very mixed assembly with high cat value. **£ 250**

BRITISH IND. OCEAN TERR.

164 Stockbook 1968 onwards mint and U/M with better pickings incl 1968 BIOT ovpts to 10r U/M, 1968 set, 1975 Birds set, 2006 Birdlife M/S, 1999 Ships set, 2007 Parrot fish M/S, approx 125. **£ 60**

BRITISH LEVANT

165 1887-1921 Very useful fresh mint range including Turkish currency EdVIII vals to 5pi on 1/-(2), British Currency 1905 set complete with few duplicates, PO's in Constantinople 1921 set of 9 vals to 180pi on 10/- plus others. SG cat in excess of £575 (50) **£ 70**

166 British Post Offices in Constantinople: 1871 (3 May) Wrapper to Malta bearing 1d red plate 130 & 4d vermilion (plate 12), both tied with large 'C' duplex cancel (SG Type Z 1) with dated circular 'British Post Office Constantinople H/S and MALTA/ MY 9/ 71. cds arrival H/S. Horizontal filing crease as normal otherwise a very fine looking double franking. SG Z 74 & Z 92. **£ 80**

BRUNEI

167 1933 (11 Apr) Registered long envelope (faults) on Govt Service to Canada bearing River 2c green, 5c brown, 10c purple on yellow, Native House 6c scarlet tied BRUNEI CDS cancels and regd etiquette No. 3650, with undated double ring POST OFFICE BRUNEI in bottom left corner. Various backstamps incl KAMLOOPS (BC Canada), SINGAPORE, Neffley Creek, folds and creases but nice genuine use. Cat £130++ on cover. **£ 40**

BULGARIA

168 1894-1917 Binder containing an interesting lot of ten Newspapers, all bearing contemporary stamps with a good variety of types. The stamps are presumably paying for delivery or a possible Newspaper tax! All are folded with very few faults considering their age. Good lot for the Bulgarian specialist/linguist! **£ 50**

BURMA

169 1938 (15 Nov) Illustrated colour FDC bearing 2a6p, 3a, 3a6p & 8a pictorial tied RANGOON FDI cancels addr to Calcutta, pretty item. **£ 18**

170 Balance of an auction lot with mint and used arranged on leaves includes officials 1939 5r violet and red mint (Cat £26), 1946 5r green and brown mint (Cat £23), 1942 Impressed by hand red seal on blank label (taken as is), few Peacock ovpts (taken as is), 1947 MLY ADMN ovpt set mint (some tones), 1942-43 Farmer issues incl surchs, 1943 Anniv. Independence rouletted mint, 1944 ovptd set of 7 mint, plenty of defins and commems to 1960s m & u, jumbled assembly. **£ 40**

171 BMA 1945 MLY ADMIN ovpt on 2a6p claret in a block of 21 (3x7), with middle stamp at base showing 'Birds over Trees' VARIETY. SG 42/42a, plus BMA 1945 3a dull violet in a bottom sheet of 64 (8x8) SG443 both fine and fresh unmounted mint. Cat £201 **£ 40**

172 Collection on leaves with useful including 1938 set used to 10r (Cat £190), 1945 BMA set used, 1946 set used (Cat £120), 1947 ovpt set used (Cat £45), mainly fine. (67) **£ 110**

173 India Used in: 1894 (Sept) Cover bearing India QV 1a plum pair and ½a green trio tied RANGOON squared circle cancels, manuscript initial across all three to cancel the stamps, addr to UK. Calcutta and Wallington transit / arrival backstamps. Fine. **£ 25**

174 Stockbook mint and used incl better noted 1937 ovpts to 1r, 2r, 5r & 10r (Cat £175), 1945 Mly Admn ovpt mint, 1946 to 5r mint, officials 1947 5r mint, 1940s-60s mint & used, nice little lot. (Approx 290+). **£ 68**

CANADA

175 1859 5c pale red beaver vertical pair on attractive c 1860s cover Toronto to USA, tied single CDS, few minor faults otherwise neat and pretty cover, SG 31. **£ 125**

176 1866 (21 Jan) Attractive cover Ottawa to USA bearing 10c purple Prince Albert neatly tied OTTAWA CDS and straight lined cancel, usual minor faults, nice example. **£ 125**

177 1868-90 Large Heads 1c red-brown (2 shades), 2c deep green, 3c brown-red, mainly sound. SG 55, 57 & 58. (4). **£ 25**

178 1869 (19 Apr) Cover Ottawa to USA bearing nice pair of 3c brown-red neatly tied OTTAWA AM AP 19 69 CDS and barred circle, roughly opened but nice 6c rate cover, SG 58. **£ 75**

179 1869 (29 Jan) Cover Ottawa to USA bearing nice copy of 6c blackish brown neatly tied OTTAWA PM JA 29 69 CDS and barred circle, the stamp is affixed upside down. Pretty cover, SG 59. **£ 100**

180 1901 FREE House of Commons parliamentary Mail, black mourning env (flap missing) bearing nice 7 / OTTAWA / JA 31 / 01 / FREE keyhole type cancel with violet signature h/s underneath. Nice example. **£ 15**

181 1946 (16 Sept) Illustrated airmail First Day Cover for Peace Re-conviction of Industry set of seven plus 10c green special delivery & 17c air special delivery each tied HAMILTON CDS cancels sent registered to Scotland, few wrinkled edges, impressive and attractive cover. SG 401/7, S15/16. **£ 100**

CANADA - PROVINCES

182 New Brunswick: 1851 3d dull red attractive fine used 4 good to massive margins (showing left hand stamp) cancelled neat barred oval, lightly struck, heavy thinning but does not detract, SG 2 Cat £400. **£ 80**

183 New Brunswick: 1867 Mourning cover bearing 5c deep green tied barred oval St John's and Montreal backstamps. SG 15. **£ 30**

184 Newfoundland: 1898 Registered cover St John's to Germany with attractive combination 1897 defins ½c olive folded over blk of 6, 2c orange pair, 3c orange pair, (SG 83, 86-7) tied CDS cancels, via London transit and onto Baden in Germany. Arrival backstamp. Fine. SG cat £31 x 10 on commercial cover. (£310). **£ 150**

185 Newfoundland: 1898-1915 Group of three Registered covers with better frankings and combinations noted 1898 15c triple weight to USA 3c orange strip of 5 with SUSPECTED LIABLE TO POSTAGE DUE, 1915 two covers to USA 1897 4c green pair, & 1915 HMS 8c orange Fishing, nice trio. (3). **£ 110**

186 Newfoundland: 1899 (31 Oct) Registered cover (folded vertically) St John's to Germany with attractive combination 1865 24c blue QV two singles (SG 30 cat £800 on cover) 1870 6c rose (SG 39, cat £256 on cvr), ST JOHN'S CDS cancels, R oval, London registered hooded cancel in violet, and London oval transits. Impressive cover, SG cover multiplier = £1056 cat value. **£ 275**

187 Newfoundland: 1900 (23 Feb) Registered cover St John's to Germany with attractive combination 1870 6c rose PAIR side marginal imprint (SG 39), 1887 ½c rose (SG 49), 2c orange-vermilion Cod (SG 51) tied barred cancels, R oval, London registered hooded cancel (two different one violet, one black) and Liverpool transits. Impressive cover, SG cover multiplier = £1137 cat value. **£ 350**

CAYMAN IS.

188 1953-62 Complete set to 10s in lightly mounted mint bottom right corner marginal plate number pairs, 4d is Bradbury imprint pair, very fine, SG 148/161. **£ 62**

CEYLON

189 1915 6c bright carmine Postal Stationery card cancelled COLOMBO machine mark and with neat violet boxed CENSOR / 16 JUL 1915 / COLOMBO across the stamp addressed to Switzerland, fine and attr. **£ 25**

190 1919 6c pale scarlet in a left marginal block of 24 (gutter on right side) unmounted mint showing watermark sideways variety. Fine, SG 305a. Scarce multiple. **£ 425**

191 1919 6c pale scarlet in a right marginal PAIR unmounted mint showing watermark sideways variety. Fine, SG 305a. **£ 38**

192 1919 6c pale scarlet in a very fresh looking unmounted mint top right 1 plate marginal block of 30 plus bottom left plate 2 marginal block of 12 all with WATERMARK INVERTED variety with very slight gum tone. Both show plate numbers in margin. Scarce in such large multiples SG 305w Cat £1344 **£ 300**

193 1919 6c pale scarlet in an unmounted mint right plate 1 marginal block of 48 showing WATERMARK INVERTED variety. Few marginal splits and slightly toned gum but very fresh looking and a scarce 'showpiece' multiple SG305w Cat £1536 **£ 250**

194 1936 Ceylon India Special Christmas Flight printed airmail cover Colombo to India bearing 6c & 25c tied COLOMBO 24 DEC CDS and violet cachet with boxed CANCELLED / 25 DEC 36 h/s across the airmail etiquette. Expertising mark STOFFER on reverse. **£ 40**

195 1938-49 Perforation varieties for three key 50c black and mauve for perf variations SG 394 (Cat £160), SG 394a (Cat £450), SG 394c (Cat £130) each mounted mint, SG 394 with brownish gum. High catalogue. (3). **£ 145**

196 Imperial album pages with a mainly used assembly neatly arranged on the printed pages, noted 1912-25 to R20, several of the high values have pen cancels or fiscal used, 1921-32 to R2 used, 1918 war Tax mint range, 1927 to R5, 1935-6 set used, Officials QV to 30c, EDVII to 30c, nice little lot (c74). **£ 36**

CHINA

197 1897 One Cent. on 3c red surcharge small part original gum with hinge remains and thins, nice frontal appearance, SG 88 Cat £500. **£ 100**

198 1901 (5 Dec) Postcard Chinese Bauen unstamped postcard sent part CDS of CHINE ARMEES 5 to Paris and manuscript Brigade d'Occupation en China along the top, interesting French soldiers mail. **£ 65**

199 1967 Two large folded airmail covers (faults) from China Publications Centre Peking to Switzerland one bearing 1967 Labour Day 4f and 30f Butterfly tied in combination. Second cover with 1967 Labour Day 8f (Mao Tse-tung and multiracial crowd with text tied with 22f alongside. One has tear at the top, both are folded or split paper with wrinkles, Stamps unaffected, nice commercial use. SG 2354, 2356. **£ 450**

200 1983-1991 First Day Covers - attractive collection in five cover binders with a large quantity of official covers each with set tied special handstamp, many thematics, colourful and lot and good qty of Approx 220+. **£ 110**

201 All periods mint and used collection on leaves mostly all different including 1890s to 50c, Republic to \$5, dozens of 1940s defins, surcharges, overprints, 1960s sets and ranges, 1979 Flowers FDC's, 1980s mint sets incl 1983 Terracotta M/S U/M, 1985 Flowers M/S U/M, etc, 100s. **£ 150**

CYPRUS

202 1928 50th Anniversary of British Rule set of 10 mounted mint with hinges, mainly very fine, SG 123/132. **£ 120**

DENMARK

203 1854-1903 Classics assembly on album leaves with single used examples (mainly fine) and seven covers including 1857 E/L Naskov to Copenhagen tied 43 numeral cancel with 4s yellow-brown, 1867 4s brown Flensburg, 1863 4s brown Sevedborg to Copenhagen, 1864 4s red on E.L., 1894 4s blue P/S env uprated 4p tied MARIBO CDS's to Assens, Officials 1871 4s red on cover, then 31 stamps from the period incl 1853 set to 16s (rated \$320), 1858 4s & 8s f.u., 1864-88 set to 16s (minor perf faults, Scott \$388), 1870-71 2sk to 48s (Cat \$660), officials 16s green (P.14 x 13½, Scott \$350). Useful and attractive assembly. **£ 350**

DENMARK - DAN. W. INDIES

204 1905 St Thomas Harbour complete set of three in hinged mounted mint blocks of 4, usual wrinkled gum, Facit 38/40 Skr 5,000. **£ 150**

205 1977 KPK90 Bi-colour reproductions set of six in full sheets of 100 produced for the 90th Anniversary of Kobenhavn Philatelist and the 70th Anniversary of the transfer of DWI to the US Virgin Islands. Includes 1 cent in two different reprint sheets showing rare inverted frames, large and small pearl flaws, the Caroe cut and others with simulated embossed perforations. Comes with original club photolitho reprint of 3c & 4c imperf stamps, data sheet and reproduction of 1856 notice. Odd corner curl otherwise fine. (6 sheets, plus three items). In original club envelope. **£ 100**

206 Postal Stationery: 1902 1 CENT on 2c blue surcharge fine used CHRISTIANSEN 1905 smudged CDS to St Thomas with no message on reverse, few light tones on left and top corner bend otherwise scarce used. Facit BK7. (3000 printed). **£ 150**

DOMINICA

207 1918 War Tax overprint on ½d green in a top marginal block of 10 unmounted mint showing plate Number 1 in top two corners. Fine SG 56. **£ 30**

ESTONIA

208 1855 Prestamp entire; a folded printed Religious message sent from Estonia to Wolmar, Latvia with black boxed handstamp and large cds on reverse. Interesting item that needs further research. **£ 50**

FALKLAND IS. DEPS.

209 1946 Thick Map 1d black and violet in right marginal unmounted mint pair with left stamp showing extra Island & gap in 80th Parallel varieties, fine, SG G2a, G2 aa. **£ 75**

210 1946 Thick Map 3d black and blue mounted mint single showing both extra Island & Gap in 80th Parallel varieties, fine, SG G4a & G4 aa. **£ 90**

211 1948 Thin Map group of mint / unmounted mint blocks of 4 incl. 6d, 9d & 1s in top right marginal blocks, 2½d in plate bottom right blk of 4, DLR Imprint marginal block of 6, SG G11b, G14/G16. **£ 120**

212 Shetland Islands: 1921-28 1d dull vermilion with nice part SOUTH SHETLANDS C CDS cancel, SG Z142. Expertised on reverse. **£ 22**

FALKLAND ISLANDS

213 1891-1898 Q.V. Mint assembly on stockcard includes ½d green, 1d (2 shades), 2d purple, 2½d (2), 2/6 blue (centred left) & 5s red, mainly fine. SG 41/42. Good cat. **£ 260**

214 1904 5s red mounted mint with hinge remains, well centred and sound, SG 50. **£ 90**

215 1907 3s deep green fine used part CDS with a few uneven perfs otherwise sound, SG 49b. **£ 60**

216 1907 3s deep green mounted mint with hinge remains, sound, SG 49b. **£ 62**

217 1912 5s deep rose-red fine used example with neat FALKLAND ISLANDS / C/ AUG / 13 CDS, well centred and beautiful appearance, SG 67. **£ 60**

218 1912 5s deep rose-red mounted mint example with hinge marks, well centred and fresh appearance, SG 67. **£ 55**

219 1912-20 Line perf 2d deep reddish purple & 2d maroon both fine hinged mint SG 62a/b Cat £825. **£ 200**

220 1912-20 Wmk MCCA Two unmounted mint blocks of four, ½d yellow-green, 1d orange-red very fine and fresh, SG 60/1. **£ 30**

221 1914 10s red on green very fine hinged mint example, fresh and well centred, SG 68. **£ 85**

222 1916 5s maroon mounted mint mint example with fine appearance and well centred, SG 67b. **£ 55**

223 1923 MS CA 3s slate-green very fine hinged mint, centred left, fine, SG 80. **£ 40**

224 1928 Wmk MS CA Two unmounted mint blocks of four, 2d left marginal block for reddish maroon, 2½d deep steel blue, very fine and fresh, SG 75c, 76b. **£ 110**

225 1929-37 Whale & Penguin set to 1s fine used, usual uneven perfs, nice cancels, SG 116/122. (7). **£ 30**

226 1929-37 Whale & Penguin set to 5s hinged mint, usual uneven perfs, 5s is incredibly fresh, SG 116/124. (9). **£ 110**

227 1949 Thin Paper white gum, 2/6 slate-black very fine mint right hand marginal example, thick paper left margin accompanies for comparison, very fine. Hejtz 90d. **£ 55**

228 1960 Birds 2d black and blue fine used example showing weak re-entry variety, second example with faults as a bonus, SG 195 ab. **£ 50**

229 1960 Birds ½d black and myrtle-green U/M example showing weak re-entry variety, SG 193 ab. **£ 32**

230 1972 First Flight from the temporary airstrip laid by Argentine air force at Hookers Point, double cacheted cover bearing ½p Flowers pair tied special FIRST OSEAS AIRMAIL 15 Nov 1972 cancel and three illus h/s in red or black plus Joint Declaration of Buenos Aires 1 July 1971 h/s alongside addr to Santa Cruz. Fine. **£ 30**

231 Official Mail: Group of stampless covers from circa 1984-86 sent locally OHMS incl Chief Executive, Government House Port Stanley, Falkland Islands Police Force, Licensing Bureau Royal Falkland Islands Police, 1990 Development Corporation, Education Dept, Office of the senior medical officer, Air service (2 diff types), Income Tax, plus many more. (38). **£ 75**

FIJI

- 232** 1935 Silver Jubilee 3d brown and deep blue unmounted mint showing dot by flagstaff variety, very fine and fresh, SG 244h. **£ 180**
- 233** 1946 2d green and magenta on paper tied part SUVA CDS showing 6 lines of shading variety, SG 255ac. **£ 22**
- 234** 1948 ½d green and 6d black (Die II) both on paper tied LABASA CDS showing extra palm frond on ½d green variety, SG 249ba. **£ 50**
- 235** 1948 ½d green on paper part CDS showing extra palm frond variety, SG 249ba. **£ 50**
- 236** 1948 ½d green two pairs on paper with RAKIRAKI CDS cancels, with the last stamp showing extra palm frond variety, SG 249ba. **£ 50**

FINLAND

- 237** 1854-1903 Classics assembly on three album leaves with nine roulette values to 1m used examples (mainly fine) and two covers including 1862 10k red on cover (flap missing) Helsinki to Abo tied CDS and pen cancel with boxed ANK ? cancel ALONGSIDE (Rated Scott \$160), 1880 cvr to Loppi with 20p blue tied part CDS and JERNVAGENS POSTKUP EXPEDITION FINSA cds, then singles 1860 5k & 10k, 1866-70 5p CDS used, 8p, 10p, 20p, 4-p & 1m (teeth missing Cat \$850), 5p laid paper (\$160), 1875-81 to 32p. Useful and attractive assembly. **£ 250**
- 238** 1874 1marka yellowish brown very fine used with COMPLETE teeth. A lovely stamp and difficult to find in such condition. SG49 Cat £1100. **£ 250**
- 239** 2014 Posti Year pack complete with all stamps for the year unmounted mint, very attractive with many thematics noted Teddy Bears M/S (Cat £43), Old Castles self-adhesive booklet (Cat £42), Janson M/S, Greetings booklet (Cat £35), Fruit, Ferries M/S, Sweet Summer booklet (Cat £42), Dudesons M/S (Cat £29), Tom of Finland M/S (Cat £22), Autumn Booklet (Cat £28), Signs of the Sky booklet (Cat £56), Bridges & Waterways (Cat £70), Independence set (cat £42). STC £518. **£ 150**

FRANCE

- 240** 1852-1880 Classics assembly on ten album pages of covers and stamps including 1852 Repub 25c on 1853 Entire Letter (Scott \$50), 1853 Empire 1c to 20c, 40c & 80c (2 shades f.u.), pair of 20c blue on 1861 cover, 1862 perf set to 80c, 1863-70 to 80c, 1869 5fr grey well centred fine used dotted star numeral '2' (Scott \$750), 1868 10c & 20c on E.L. to Geneva, 1870-75 to 80c, 1876-78 incl 20c & 30c on E.L., single vals to 5f lilac, 25c black on red on cvr etc. Attractive collection with many nice copies. (Approx 40). **£ 280**

241 1853-1870 Heavily duplicated Napoleon and Ceres imperf and some perf values mainly 1853-71 Napoleon 20c blue (Approx 600+), perf Ceres 25c blue (Approx 130+), then few other values to 40c orange. Good catalogue and plenty of nice numeral postmarks, mainly appears all different. **£ 300**

242 1867 Napoleon 30c brown mint large part original gum with four good margins, minor gum bends otherwise scarce so nice, SG 116 Cat £1300. **£ 85**

243 1870 Ceres 30c brown on paper with four very large margins and cancelled dotted diamond postmark, SG 175. **£ 40**

244 1870 Ceres 5c yellow-green on paper a multiple franking including a pair and two singles to make 20c rate cancelled ARP dotted diamond postmarks, mostly four margins and fine, the pair has margins all round, SG 157 cat £1000 as singles. **£ 125**

245 1929 International Philatelic Exhibition overprint on 2f red & green with superb ENTZHEIM 1931 hexagonal cancel, superb, SG 470 Cat £1000. **£ 300**

FRANCE - COLONIES

246 French Southern & Antarctic Territories: 1968-69 Air set of 2 40f & 50f fresh lightly mounted mint, SG 45/6 Cat £250. **£ 100**

247 French Southern & Antarctic Territories: 1979-1981 Mint stock in a sheet folder for complete sheets of 10 unmounted mint, many nice issues including 1980 Trees 10f (Cat £60), HMS Terror (Cat £32), 1984 Manned Flight setenant strips, 1980 Admiral sheet of 25 (Cat £52), 1983 Air Sputnik setenant strips (7 sheets, Cat £220), 1983 Air Dog Sledge (5 sheets, cat £350), 1982 Philex France (5 sheets, cat £412), ideal for breakdown, high cat STC +. 100s. **£ 125**

248 French Southern & Antarctic Territories: 1980-19 twenty five complete sheets unmounted mint, many nice issues duplicated including 1980 Frigates 1f.10 (5 sheets of 25, Cat £250), 1f.50 sheet 25 (Cat £60), 1980 Air Satellite (Cat £57), 1980 Dumont sheet 25 (Cat £42), 1980 Amsterdam Island sheet of 25 (Cat £87), 1980 Fauna 70c (5 sheets cat £275) & 1f sheet 25 (Cat £60), 1980 Sebastian de El Cano 1f.40 sheet of 25 (5 sheets cat £300), 4f value in sheet 25 (2 sheets, Cat £200), 1981 Arctic Transport sheet 25 (Cat £57), nice thematics, high cat STC £1400+. 100s. **£ 150**

249 French Southern & Antarctic Territories: Mint stock in a sheet folder for blocks and large multiples unmounted mint, many nice issues including 1985 Air La Novara frigate (9 cat £9 each), Explorer and seal gutter marginal block of 4 (Cat £48), 1983 Anniv. setenant strips in complete sheets of 25, 1984 Manned Flight in setenant blocks, 1989 Fr. Revolution M/S U/M & used on special page (Cat £54), plus many more, ideal for breakdown, high cat STC €2000+. 100s. **£ 180**

GAMBIA

250 1898 1s violet and green mounted mint with hinge remains showing Malformed S variety, very fine, SG 44a. High cat variety. **£ 325**

251 1953 Pictorial long set of 15 each value in bottom right corner marginal plate number PAIRS lightly mounted mint, very fresh and attractive format, SG 171/185. **£ 75**

252 SPECIMEN Overprints on eight Queen Victoria reply card, registered P/S env. Includes QV 1d red Reply card, 1d red single card, 1½d grey with very small SPECIMEN in black (rare type), EDVII 1d single card, 2d blue registered env., GV 1d red reply card, 1d red single card & 1½d blue registered env. each with SPECIMEN diagonally across the centre in black on both sides. Nice group of 8 Specimen items. **£ 110**

253 SPECIMEN Overprints on five Queen Victoria reply card postal stationery & one EDVII reply card. Includes QV Reply card x 5, EDVII reply card each with SPECIMEN diagonally across the centre in black on both sides. Nice group of 6 Specimen items. **£ 75**

GERMANY

254 1872 Large Shield 9kr red-brown very fine CDS example with Renaud de Montbas French 2018 certificate. Superb, Michel 27a, €500. **£ 150**

255 1872-1879 Classics assembly on three album pages incl three covers including 1874 2gr blue on preprinted env., 1879 regd 10pf red P/S env uprated with 10pf & 20pf defins tied Rogasen CDS's, then singles 1872 small shield 2k vermilion (Cat €275), 1872 large shield ¼gr, ½gr, 2gr, 5gr, 1k, 3k, 7k, 1877 50pf f.u. etc. Attractive assembly. **£ 36**

256 1924 40pf olive green Eagle & 1928 80pf chocolate Hindenburg both bottom marginal examples with vertical rule lines of imprint commercially used and expertised on reverse 'Schelgel BPP' Michel 360 var & 422 var Cat 1600 Euros. **£ 150**

257 1931 Air Polar Flight Zeppelin 2m blue used wavy line cancels neatly fine used, SG 470. **£ 75**

258 1945 Post WWII local issues from various towns/cities chiefly hinged mint including Third Reich issues with different overprints (18, ovpts cannot be guaranteed), Provinz Sachsen industry set of 3; two sets with Dessau and Eilenburg overprints, Meissen set of 4, Stadt Storkow(2) and a few others. Interesting lot (39) **£ 60**

259 Occupation of Sudetenland: 1938 (8 Oct) Reichenberg unaddressed cover bearing Wir Sind Frei 1k lilac (Michel 24, Cat €80 on cover) & 50k green in a block of 4 (Michel 137, cat €1600 on cover), tied REICHENBERG 1 / HEIL HITLER CDS cancels, comes complete with 2016 Robert Brunel certificate and additional Dr Dub handstamps applied next to each stamp on the cover. Vertical fold not affecting the stamps, extremely scarce cover. Michel €1680. **£ 450**

260 Officials: 1921 10pf dark orange fine used with double ring cds cancel Mi 65 Cat 600 Euros. **£ 140**

261 Well filled springback album with early to modern collection on many leaves, very mixed but noted 1926 Air to 3m m & u, 1928 Air Zeppelin 1m red used (Cat €60), East & West Germany 1949 Stamp Centenary set, few German states and Colonies, Zones and occupations, many 100s, needs sorting out. **£ 100**

GERMANY - COLONIES

262 South West Africa: 1906 Very fine Feldpost card sent to Bremen with very fine GOBABIS DEUTSCH - SUDWEST AFRIKA CDS together with unusual black negative Gobabis Posthorn handstamp. **£ 200**

GERMANY - STATES

263 Bavaria: 1920 Free State overprint Imperf King Ludwig set of 20 values used on two slightly aged sheets tied MUNCHEN 13 / 31 / MAR / Vor 10-11 / 20 CDS cancels by favour, SG 195B/214B, Cat €925 used. **£ 150**

264 Wurttemberg: Officials No wmk; Mint blocks on four album pages includes 1881 20pf ultramarine in blocks of 30 (2), 15, 5 (2) (Michel 204a cat €2.50 each, €212), 1890 3pf brown in multiples of 30, 25, 20, 10 (Michel 208 cat €4 each, €340), 5pf green in blocks of 25 (3 blocks) & block of 10 (Michel 209 cat €6 each, €510), 1902 40pf black and carmine blocks of 10 (3), block 8, blocks of 15 (3) cat €6 each, €498). Few affixed with the margins otherwise fine and fresh. Cat €1560. **£ 120**

GERMANY (WEST)

265 Schaubek album with a mint and used well filled printed album for 1949-76, huge range of defins and commems, mostly catalogued up a long time ago, ideal for expansion. 100s. **£ 45**

GIBRALTAR

266 1886-1898 Mint QV assembly including 1886 ½d & 1d (Cat €108), 1886-7 ½d & 2½d (Cat €110), 1889-96 5c to 75c complete, 1p bistre & Ultr., 2p (2), 1898 2d, 4d, 6d & 1s (Cat €97), mainly sound. (20). **£ 85**

267 1889 5c green fine used small CDS along the bottom showing Broken M variety, very fine, SG 22a. High cat variety. **£ 34**

268 1903-1911 Mint EDVII assembly including 1903 set to 1s, 1904-08 2s green and blue (ordinary paper), 1906-11 1d, 2½d & 1s, mainly sound. (10). **£ 100**

269 1999-2006 Extensive mint and mainly unmounted mint collection in a well filled DAVO hingeless album, with dozens of commem sets, miniature sheets galore incl a few doubles, massive amount of face value, collected mainly as new issues, high cat in a overfull DAVO album and slipcase. **£ 180**

270 2010-2017 Extensive mint and mainly unmounted mint collection in a well filled DAVO hingeless album, with dozens of commem sets, miniature sheets galore incl a few doubles, massive amount of face value incl 2017 Referendum £5, and many sets to £3, collected mainly as new issues, high cat in a overfull DAVO album and slipcase. **£ 380**

GOLD COAST

271 1884-91 4d deep mauve & 4d rosy mauve both shades appear unmounted mint, just the odd speck on the gum, SG 16 & 16a Cat £70. **£ 60**

272 1935 Silver Jubilee 1d ultramarine and grey-black and deep blue mounted mint showing extra flagstaff variety, thinned and poor gum and few blunt perf but overall fine appearance, cheap estimate, SG 113a. Cat £160. **£ 40**

GREAT BRITAIN

273 1743 Entire letter Newport Pagnel to London bearing two line NEWPORT / PAGNEL two line h/s in black, incomplete bishop mark 18 Jun. Written from Fotheringhay, usual fold etc. Scarce. **£ 85**

274 1764 Entire Letter Truro to Kent bearing nice 13 / OC large bishop mark and single line TRURO h/s in black alongside. **£ 45**

275 1792 Entire Letter Froyale to London bearing ODLAM single line h/s (different spelling for ODIHAM near Froyle), usual folds, scarce early cancel. **£ 60**

276 1793 Entire from Sheffield to Selkirk Scotland, with SHEFFIELD horseshoe h/s in black (unlisted in Whitney), addressed to John Walker Carlisle Bagg, usual folds etc. Clear strike. **£ 50**

277 1800 Entire letter Aylesbury to London (redirected) bearing a nice AYLESBURY convex cancel on obverse with two datestamps on reverse plus part Charing / Cross boxed h/s on reverse. **£ 40**

278 1800-1821 Two Entires both Manchester 185 mileage marks in red, 1821 E.L with additional PAID AT MANCHESTER circle cancel in red (good strike) sent locally, other sent to Aylesbury, usual folds etc. **£ 30**

279 1813 Three pre-stamp covers from the same correspondence each Belford to Edinburgh, charged 8d rate, bearing nice BELFORD / 326 mileage marks, along with red dated CDS applied in Edinburgh. Usual folds. **£ 45**

280 1813-34 Two pre-stamp covers Birmingham Evesham showing PAID / AT / BIRMINGHAM boxed in red plus mileage mark, and second 1813 E.L to Edinburgh with ADD ½ boxed h/s in black, along with red dated CDS applied in Edinburgh. Usual folds. (2). **£ 24**

281 1817 Entire Letter BRIDGEWATER / Penny Post two line handstamp on obverse to Wells in Somerset with boxed No.1 h/s on reverse. **£ 24**

282 1818 Entire Letter from Sheffield to Edinburgh, with SHEFFIELD mileage mark in red, with JUL / B 15 M / 1818 CDS in red alongside, part Add ½ boxed h/s in black for additional cost to Scotland. Usual folds etc. Clear strike. **£ 25**

283 1820 Entire Letter from Sunderland to Edinburgh, with SUNDERLAND 22 JU 1820 / 276 mileage mark in black, with JUN / B 23 M / 1820 CDS in red alongside ADD ½ chargemark. Usual folds etc. Clear strikes. **£ 25**

284 1821 Entire from Shrewsbury to Edinburgh, with SHREWSBURY 165 mileage mark in dated arc in black, additional red APR / B 27 M / 1821 in circle usual folds etc. Clear strike. **£ 25**

285 1821 Entire Letter from Stortford to London, with BPS STORTFORD / PENNY POST two line /s in red and 8 chargemark, red arrival b/s. Usual folds etc. Clear strike. **£ 35**

286 1825 Entire Newton Abbot to Plymouth bearing a nice strike of Newton abbot / P.y Post strike in black on reverse, No.1 boxed in black on obverse, 8 chargemark. Fine. **£ 20**

287 1831 Liverpool Penny Post, two strikes of boxed h/s on obverse of an Entire to Edinburgh & 1839 Entire Liverpool to Edinburgh with Add ½ and Liverpool dated arc in red. **£ 20**

288 1832 Entire Letter Cottingham to Beverley (Yorkshire, 15 miles from Hull) bearing two backstamps TOO LATE boxed in black in small typeface. Hull 8 Aug dated arc in black., chargemark 8 next to the Hull cancel. Nice example. **£ 35**

289 1832 Entire Letter Tunbridge Wells to Lincoln's Inn bearing nice TUNBRIDGE WELLS undated complete circle h/s in red, receiving F d/s in red, usual folds etc. **£ 40**

290 1834 Entire Letter Oxford to Aylesbury bearing a part strike of PAID AT / OXFORD boxed strike in black on reverse, Oxford dated arc in black on reverse, 8 chargemark. Fine. **£ 35**

291 1835 Entire Letter Bradford to Bristol bearing part strike of PAID AT BRADFORD in red oval h/s, Bradford dated cancel on reverse. Usual folds. **£ 20**

292 1836 (April) Entire Oldham to London bearing faint Oldham P.P. boxed in red with PAID AT MANCHESTER part circle in red and London 'tombstone' E PAID h/s alongside, damaged from opening and horiz. fold with some soiling. **£ 28**

- 293** 1836 Entire Manchester to Plymouth bearing PAID AT MANCHESTER circle cancel in red (good strike), usual folds etc. **£ 35**
- 294** 1836 Part Entire Letter Kendal to Edinburgh, bearing neat Kendal / P.y Post two line h/s in blue with receiving backstamp in red. Nice strike. **£ 35**
- 295** 1839 Entire Letter Hull to Beverley (Yorkshire, 15 miles from Hull) bearing two backstamps TOO LATE boxed in blue in upper case letters. Hull 27 Feb dated arc in blue., chargemark 4 on obverse. Nice example. **£ 40**
- 296** 1839 Entire Newbybridge to London bearing a nice strike of NewbyBridge / Penny Post strike in black on obverse, Milnthorpe dated arc cancel in black and London arrival b/s. Usual minor faults. nice strike. **£ 30**
- 297** 1839 Entire Wykeham to Beverley bearing superb strike of Wykeham / Penny Post, 8 manuscript chargemark and Malton / Penny Post in blue on reverse, very scarce combination. **£ 120**
- 298** 1840 1d black (BA) Two margin example showing very rare Number 3 in Maltese Cross postmark. Cut into along the top and left side but very neat cancel showing bottom 2/3rds of the cancel and clear No.3. Sound and rare! SG Cat £15,000 for four margins. **£ 1500**
- 299** 1840 2d blue (EG) two to three margin example with black MX cancel, small faults otherwise neatly cut round, nice spacefiller. Cat £975. **£ 55**
- 300** 1840 Entire Letter Twickenham Common Wells to Battle Sussex bearing nice Twickenham / 1D PAID h/s in black, further PAID 15 FEB red d/s alongside and clear strike of Missent to / Kingston in red, Kingstone dated arc alongside. Usual folds. Scarce. **£ 85**
- 301** 1840 (May 5th) The day before the Penny Postage system introduced a Entire manuscript OHMS from London to Bangor with crowned PAID 5 MY 5 / 1840 superb strike in red on obverse. Instruction in red along the top 'no such person or place at Bangor Carmarthenshire' at base, 'try Wrexham'. On reverse 6th May BANGOR double arc, cancelled on the day of the Penny Black Penny Postal service. Interesting item. **£ 85**
- 302** 1840-1951 Collection on leaves mint and used with useful run of material QV onwards including 1840 1d black (poor), 1870 ½d bantam (11), 1858-74 1d plates run used, 2d blue plates (6), 1856-1880 many vals to 1s (mixed), 4d verm. pl.13 Malta cancel, 1867 2s blue (few perf faults), 1867 5s rose pl.2 (faults cat £1500), 1873-83 2½d rosy-mauve (12), 2½d ultr. (6), 3d rose plates run, 4d sage-green pl.15 & 16, 4d grey-brown pl.17 & 18, 6d grey plates 13-16, 1883 to 5s, EDVII to 5s, Officials incl Board of Education EDVII 1d f.u., GV to 10s, 1948 RSW set used, etc, very mixed but ideal for expansion. **£ 275**
- 303** 1841 1d red-brown block of 6 (DE-EG) fine used Windsor 890 numeral cancels neatly struck with unevenly cut into with margins on most sides, other faults including torn top middle stamp and creases, otherwise scarce block with high cat value. **£ 150**
- 304** 1841 2d blue small plate reconstruction booklet with 93 used examples mostly 1844 type cancels or London / Scottish numeral cancels in varying condition and varying margins, plenty of shades and postmarks plus a strip of 4 (poor, cut into badly), useful group circa 93 examples. Cat £8370. **£ 450**
- 305** 1841-1880 Classics assembly on fourteen album pages including 1841 2d blue (4 margins, numeral cancel), 1842 1d pl.23 on E.L., 1855 4d & 6d, 1864 E.L to Paris with 4d red (small letters), tied 16 numeral cancels, 4d red wing margin used, 1865 4d verm. pl. 11 on 1869 cvr to France, 1867 3d, 6d & 10d plus 3d pl.9 on cover to France with perfin for C Devaux London, 1878 newspaper wrapper uprated with ½d tied P. F.6 CDS's, 1873 3d pl.11 on cvr to USA, etc. Attractive assembly with many nice copies. (Approx 31 + 9 covers). **£ 250**
- 306** 1842 Plate 24 1d red-brown (NE) very fine used four enormous margins with neat black MX cancel, on white paper, fine. SG Spec. BS5. Trace of bend otherwise a premium example **£ 65**
- 307** 1843 (27 Nov) Cliffords Inn Entire Letter to Leamington bearing 1d red-brown imperf tied good strike of No.8 in Maltese Cross, folds and ink marks otherwise good strike. **£ 150**
- 308** 1849 2d blue plate 4 attractive block of 4 (OG-PH) with good margins all round cancelled 36 numeral postmark showing recut sideline on PG, and burr on left of PH, scarce multiple, SG E514h. **£ 225**
- 309** 1854 (8 Nov) Cover bearing two 1d red-brown cancelled (not tied) by two 523 numeral cancels of Merthyr Tydvil in black with red dated arc on reverse, few minor marks Cat £120 on cover. SG 17. **£ 30**
- 310** 1855-57 Four different printings for 4d carmine including Wmk Medium Garter highly glazed (SG 63, cat £575), Wmk Large Garter 4d rose-carmine (wing margin f.u. 75 numeral), 4d rose f.u. N17 cancel, 4d rose-carmine on thick paper 18 numeral cancel (little heavy), nice group, SG 63, 66, 66a & 66b. Cat £1250. **£ 200**
- 311** 1856 (28 Mar) Entire Letter London to Brussels bearing 19847 6d embossed (cut into) and 1856 2d blue both tied 18 numeral cancels, underpaid with additional 2d blue affixed with PD in red circle tying one of the 2s stamps. Braggioti Testa & Co London trade h/s on obverse, various transit and arrival backstamps, Faults, wrinkles and filing fold otherwise pretty cover. Cat £1900+ on cover. **£ 125**

- 312** 1856 P.14 Wmk LC 1d red-brown fine original gum example NI, slightly centred low, nice colour, SG 29. Cat £240. **£ 24**
- 313** 1859 (1 Dec) Small cover Chester to Liverpool bearing 1d rose-red p.14 tied nice strike of CHESTER 180 spoon cancel, fine appearance. **£ 100**
- 314** 1859 Part Entire Howden Pans to North Shields bearing nice single line Howden Pans h/s in black, and blue NORTH SHIELDS arrival backstamp. **£ 28**
- 315** 1862-64 Wmk Emblems 3d bright carmine-rose unused with very small part original gum, incredibly fresh appearance, SG 76 Cat £2700 mint. **£ 150**
- 316** 1865-73 4d vermilion mint or regummed selection of five different examples for plate 7, plate 10, 11, 12 & 13, various gum condition from large part original gum to regummed, all nice examples except for pl.13 which is faded somewhat, huge cat value Cat £2875. (5). **£ 300**
- 317** 1865-73 4d vermilion mint or unused selection of four examples for plate , plate 9 (regummed), plate 12 (tiny closed tear) and plate 14. Cat £2550. **£ 150**
- 318** 1867-83 £5 Orange (DD) a right hand marginal single, hinged mint with two light creases and minor blemishes on the margin, fabulous colour and fine appearance, SG 137 Cat £12,500. Superb opportunity to own this iconic stamp. **£ 5000**
- 319** 1867-83 White paper £5 orange key value fine used two good strikes of GLASGOW MR 9 95 CDS'S few minor ink spots on reverse, two showing through at the base, very well centred and well above average for this high value. SG 137. **£ 1550**
- 320** 1873-80 3d rose coloured letters, plate 11, IMPERF from imprimatur sheet Wmk Spray superb mint lightly hinged with four margins and beautiful strong colour, superb! SG Spec. J36(var) Cat £2500, extremely rare. **£ 2000**
- 321** 1881 2½d blue plate 23 fine mounted mint example, hinge remains and fresh gum and appearance, SG 157 Cat £450. **£ 150**
- 322** 1883 White Paper 2/6 lilac a lovely hinged mint example with excellent centring and colour, vertical gum bend otherwise fresh, SG 178. **£ 200**
- 323** 1883 White paper 2/6 lilac very fine and lightly hinged mint, one pulled perf at top other fine and fresh, SG 178 Cat £600. **£ 180**
- 324** 1884 6d dull green a lovely hinged mint example with excellent centring and colour, fresh, SG 194. **£ 200**
- 325** 1887 1½d dull purple and green a small group of perfined blocks of 8 (9), blocks of 6 (4), blocks of 4 (3), mixed condition mostly on original paper with a variety of cancels, perfins are fancy AI s. (108 stamps). Cat £1900+. **£ 80**
- 326** 1902 £1 Dull blue-green unmounted mint example with couple of light gum bends mentioned for accuracy but does not detract in any way, very fine fresh appearance with good centring and colour, SG 266 Cat £2000 as mint. Must be worth double for U/M. **£ 1000**
- 327** 1902 5s bright carmine hinged mint with small hinge remains, extremely fresh and fine colour, SG 263. **£ 300**
- 328** 1902-10 Twenty seven hinged mint examples from ½d to 1s with good range of shades, includes 1d (3), 1½d (3), 2d (3), 2½d, 3d (5), 4d green and brown (4), 4d orange (2), 7d grey (2), 10d & 1s (2), SG range 215-259 Cat £1140+. **£ 400**
- 329** 1902-1913 Attractive mint collection of shades from different printings including 1½d (2), 2d (2), 2½d ultr. (2), 3d (2), 4d (3), 4d orange (3), 5d (3), 6d (3), 7d, 9d (2), 10d (2), 1s (3), all hinged mint with remains or some are very lightly mounted, excellent colours, need identifying, minimum cat £950. **£ 350**
- 330** 1911-13 2/6 dull reddish purple mounted mint with hinge, extremely fresh and fine colour, SG 316. **£ 200**
- 331** 1912 1½d red-brown unmounted mint and 1½d deep yellow-brown mint both in superb BLOCKS OF 4 very fine & fresh SG Specialised N18 (10), SG N18 (11). Cat £300. **£ 120**
- 332** 1912 Royal Cypher watermark 1d scarlet-vermilion in a superb BLOCK OF 4 very fine fresh hinged mint example (barely trace of hinge), seldom found in blocks, rare shade, SG 361. Cat £500 mint . **£ 200**
- 333** 1912-24 Simple Cypher wmk attractive mint collection of shades including ½d (5), 1d (4), 1½d (3), 2d (2), 2½d (3), 3d (4), 4d (3), 5d (3), 6d (3), 7d (3), 8d (2), 9d agate (2), 9d olive (2, one U23 p. control), 10d (2), 1s (2), all hinged mint with remains or some are very lightly mounted, excellent colours, need identifying, minimum cat £1000+. **£ 350**
- 334** 1913 Waterlow £1 green superb fine used incomplete CDS very well centred, striking colour and fine example. SG 405. Cat £1400+ 45% premium = £2000+. **£ 750**
- 335** 1913 Waterlow 2/6 Sepia-Brown very fine fresh hinged mint example, lovely colour, SG 400. Cat £300. **£ 120**
- 336** 1913 Waterlow 5s rose-carmine hinged mint with fine fresh appearance and excellent centring, attractive example, SG 401 Cat £625. **£ 225**

- 337** 1918 Bradbury: 2/6 Chocolate brown lovely centring and fine hinged mint, very fine and fresh, SG 414. **£ 60**
- 338** 1918-19 Bradbury 5s rose-red very fine fresh hinged mint example SG 416 Cat £325. **£ 110**
- 339** 1919 Bradbury: 10s dull grey-blue with centring right and fine hinged mint, very fine and fresh, SG 417. **£ 180**
- 340** 1919 Bradbury: 5s rose-red with good centring and fine hinged mint, very fine and fresh, SG 416. **£ 130**
- 341** 1924 1½d red-brown very fine unmounted mint showing CANCELLED overprint in black type 28, Cat £110. SG N35w. **£ 55**
- 342** 1924 1d scarlet very fine unmounted mint showing CANCELLED overprint in black type 28, Cat £110. SG N34x. **£ 55**
- 343** 1924 ½d green very fine unmounted mint showing CANCELLED overprint in black type 28, Cat £110. SG N33w. **£ 55**
- 344** 1924 Six shades mounted mint, 3d violet, 3d pale violet, 3d pale dull reddish violet, 3d deep violet, 3d deep brownish violet, all fine, SG Spec. N38 (1-6). Cat £155. **£ 62**
- 345** 1924-1994 Double mint and used collection includes 1924 Wembley U/M, 1929 PUC low vals set U/M, 1934 Photo. set U/M, 1937 defin set U/M, 1939-48 set 6 with 10s dark blue mint, 1948 RSW set U/M plus set f.u., 1952 Wilding set m, 1955 set mint, Wmk sideways to 3d m / U/M, Graphite sets incl U/M, P. Dues 1959 set to £1 U/M (Cat £65), 1970 set U/M, 1982 set U/M, 1994 set U/M. Useful pickings and good cat value. **£ 200**
- 346** 1929 Postal Union Congress £1 black very fine mounted mint with small hinge remains, good centring and very fine, SG 438. **£ 350**
- 347** 1929 Postal Union Congress £1 black very fine unmounted mint example, lightly even toned gum, very fine and fresh, SG 438 Cat £750 for mint. **£ 450**
- 348** 1929-1990 DAVO luxury hingeless printed album in dark blue with gold blocking, sparse run of issues, ideal new project, expensive new! **£ 40**
- 349** 1935 Silver Jubilee 1d scarlet Wmk upright, cylinder booklet pane of 4 unmounted mint Cylinder No.37 showing repair under 1 variety, trimmed perfs on 3 sides, imperf on two of those, scarce pane, SG Spec. NComB6 & variety NCom11c, Cat £300. **£ 100**
- 350** 1937 (30 July) Registered plain cover sent locally in Aberdeen bearing 1½d red-brown block of 4 tied local FDI CDS's. Very fine. **£ 20**
- 351** 1937-1937 Mint and few unmounted mint on double sided stockpage incl 1939-48 set of 6 to £1 appears U/M, 1948 RSW set U/M, 1951 set 4 U/M, 1937 set, watermark varieties incl sideways and inverted to 2½d, also two West Country Air Service bicolour proofs (2), nice selection. (34 + 2 proofs). **£ 160**
- 352** 1947 UPU Delegation book in French and English for the Paris Congress, includes various photographs and a postal history from the Dockwra, stamps affixed included 1940s pale colour definitives, 1939 low values 2/6, 5s & 10s ultr., 1940 Stamp Cent. set, 1946 Victory, Postage Dues 1937-8 set 8 (Cat £290), then some P.O. in Tangier, Postal stationery cards and envelopes, regd env, each glued or affixed to the pages. Marks on the outer cover otherwise fine. Only 296 of these were distributed for the Congress. **£ 125**
- 353** 1948 (1st Oct) £1 brown top value first day cover Torrington Devon to Bideford tied first day of issue on creased and lightly toned cover, vertical and horizontal folds, Cat £350. **£ 150**
- 354** 1960 GLO set on special London International Stamp Exhibition illustrated FDC bearing set 2 tied special Exhibition cancels, very fine and neat, Cat £200. **£ 65**
- 355** 1970-2013 Used collection in five Lindner hingeless printed albums and slipcase in Burgundy with several are the colour printed editions, very expensive new, 100s. heavy lot. **£ 50**
- 356** 1974 Fire Service set of four on Benham unaddressed cover tied boxed CAMBRIDGESHIRE FIRE & RESCUE SERVICE 24th April cancel. Very fine. **£ 20**
- 357** 1974 Universal Postal Union set on special National Postal Museum reprinted 1890 Jubilee cover illustration, fine, Bradbury £100. **£ 40**
- 358** 1977 £1, £2 & £5 each in unmounted mint traffic light gutter pairs, fine SG 1026/1027/1028. **£ 16**
- 359** 1990 Mulready reproduction by Royal Mail for 150th Stamp Anniversary x 3 unused examples. **£ 15**
- 360** 1992 Harrison High values in plate 1A bottom left cylinder blocks of 4 unmounted mint for £1.50 (Cyl. 4N, mark on one stamp), £2 (Cyl. 4F), £5 (Cyl. 7E) SG 1612-3, 1614, face £34, cat £128. **£ 40**
- 361** 1997 Enschede Castle High values in plate 1A bottom left cylinder blocks of 4 unmounted mint plus 1992 Harrison £2 4F Cylinder block of 4, SG 1613, 1993/1996, face £46, cat £320. **£ 60**
- 362** 2006 Bletchley Park - Multi signed limited edition cover of 1000 for Bletchley Park WW2 Veteran cover bearing six stamps cancelled special Bletchley Park Post Office cancel, signed on reverse by four different service women who served there as WRNS in the war. Published by Chapman and Mitchell Covers. **£ 75**

363 Accumulation in a carton good range includes mint blocks from 1960s in stockbook, tatty small stockbook with 1840 1d black (no margins), QV mixed surface printed to 2s, 1880 1d lilac 14 dots used (2), 1887 to 1s incl perfins, 1902 EDVII to 1s (mixed) plus 1s mint (rubbed), 1912 8d used (11), modern fine used in two well filled binders, etc, 1000s. **£ 40**

364 Control singles and pairs mint for 1912-1934 1½d red-brown controls singles G27, M30, I28, F26, B24, V23, pairs U34, A24, U23, N19 blk of 6, mainly fine group. (10). **£ 25**

365 Control singles and pairs mint for 1912-1934 1d red controls singles V23, C13, T22, R21, F26, U23, pair J28, strip 3 V34, S22, 2½d blue N19 blk of 4, I28 pair, mainly fine group. (13). **£ 26**

366 Control singles and strips of three mint for 1912-1930 ½d yellow-green singles controls (9), V23 pairs, O19 strips of 3 perf & imperf margins, R21, Q20, T22, S21, V34, P31, L29, K29, E26, D25, C25, N19 blk of 6. Mainly fine group. (28). **£ 60**

367 Control singles mint for 1902-11 ½d yellow-green A control (5), G8, H9, I10, E6 strip of 6, ½d blue-green C, 1d red A11 (2) & C. (13). **£ 30**

368 Liverpool, two Entires one 1789 straight line LIVERPOOL to Edinburgh with red Bishop Mark in Scotland, second 1843 Liverpool dated arc in red to London. Usual folds, nice duo. **£ 30**

369 PAID AT BARROW GATE - Red Circular handstamp in top right corner of a pre-stamp undated Entire addr to Salop with undated BARROWGATE red unlined arc on reverse, scarce. **£ 60**

370 Post Office Training stamps: 1970s large mint blocks for a variety of values comprises 2p green (115 incl two panes of 50), 2½p magenta (115), 3p ultramarine (115), 3½p bronze-green (115), 4p ochre (115). Mainly fine. (575). **£ 200**

371 Postal History ranges incl 1d venetian red, 1d plates, 1d lilacs, few 1887 types to 5d incl uprated 2d regd env., 1870s postal stationery. Mainly 1d to 3d rates, some to USA etc. (45). **£ 80**

372 Press Sheets: 2010 London Festival complete roll nine uncut miniature sheets in tube, few margin bends otherwise fine, (face £35.10) limited to 2010 printed. 2010 GV Accession uncut press sheet of 20 miniature sheets face £39, ltd to 2010 also. High retail. (2 sheets). **£ 85**

373 Propaganda Forgeries: 1944 (Sept) set of six values ½d green to 3d violet as prepared by Germany on wavy line watermarked un gummed paper, fine, Michel 3/8. £500. **£ 200**

374 Post Office Savings Bank 1s blue and red x 3 singles used on vertical strip of three forms with BENHILTON SUTTON SURREY 1 SEPT 1923 CDS'S fine, SG POSB2. **£ 85**

375 QV Penny Reds assembly laid out on Hagner pages includes 1854-57 1d stars incl blued papers (90+), 1d plates (410+), poor to fine but plenty of postmarks and good cat value. (Approx 500). **£ 48**

376 Small accumulation with better pickings including 1841 2d blue with No.1 & 11 in MX cancel, 1908 Sark PPC, 1893 Liverpool 466 hooded cancel, Lundy 1974 defins FDC, GV defins sorted into envelopes, QV 1d plates, 1887 to 1s duplicated 1s green used (15, v mixed) & 9d mint, Officials on 1d lilacs, GVI high vals to 10s on stockcards plus to 10s mint on leaves, surface printed on thin leaves v. mixed incl 3d rose plates (5), bag of EDVII 1d red (100s), Herm 1956 PPC, GVI light colours in small coils rolled, 1971 side-band booklet pane on FDC and used panes, etc, intr little sorter. 100s. **£ 75**

377 YORK single line h/s in black on front to The Lady Kaye York, E.L. to Col. Ramsay Harley St, London. Faults, both good cancels. **£ 36**

GREAT BRITAIN - CHANNEL IS

378 Balance of a wartime lot for Guernsey and Jersey on stockpages including Guernsey 1941-44 Arms ½d m & u duplicated, Bluish paper set 2 mint (Cat £50), Jersey Arms 1941-43 ½d mint (3), 1d red mint (5), ½d pair on cover, 1d red on two covers. Few forged imperf pairs, Views on cover. (49 + 9 covers). **£ 65**

GREAT BRITAIN - GUERNSEY

379 1941 (28 Jan) 2d orange bisect on unaddressed envelope, bottom marginal single bisected and tied 28 Jan 41 CDS. SG BS5. **£ 20**

380 1941 (7 Apr) Three First Day of Issue covers / card including plain typed postcard for ½d green pair, plus two envs one with marginal pair sheet number 1921, other two singles all nice clear FDI cancels. **£ 20**

381 1941 Two 1940 Stamp Centenary 2d orange bisects on two covers one dated 31st Jan with printed address, other 21 Feb, both fine. SG BS7. (2). **£ 32**

382 1941-44 Set of three in blocks of 4, ½d & 1d are two are mint/ two U/M. 2½d is U/M right marginal blks of 4. **£ 30**

383 1953 (20 July) GVI GB 8½d gray embossed F size registered envelope used from Guernsey to Cornwall, cancelled MARKET PLACE GUERNSEY CDS cancels. **£ 24**

GREAT BRITAIN - HAND ILLUSTRATED COVERS

- 384** 1904 African man with ice bucket and bottle in black pen and ink hand illustration on envelope to London bearing 1d red tied London squared circle. Few tones on edges otherwise pretty cover. **£ 80**
- 385** 1904 Cherubs with male or female dolls; pen and ink hand coloured illustrated envelope to London bearing 1d red tied London CDS cancel. Few light tones and tape mark in bottom corners otherwise pretty cover. **£ 85**
- 386** 1904 Cossack riding standing up on a horse; pen and ink hand coloured watercolour on London London & NW Railway Co. envelope bearing 1d red tied London CDS cancel. Few tones on edges and tape residue on one corner, otherwise pretty cover. **£ 125**
- 387** 1904 Daffodils ; pen and ink hand coloured watercolour on envelope to London bearing 1d red tied Willesden CDS cancel. Few tones on edges and torn flap, otherwise pretty cover. **£ 100**
- 388** 1904 Fashionable lady with red coat and hat; pen and ink hand coloured illustrated envelope to London bearing 1d red tied Willesden CDS cancel. Few light tones, pretty cover. **£ 85**
- 389** 1904 Flying bat and goblin lady (banshee) in green and yellow; pen and ink on hand coloured envelope to London bearing 1d red tied London CDS cancel. Few tones on edges and two tape marks, otherwise pretty cover. **£ 100**
- 390** 1904 Green squares on printed graph paper design; pen and ink on illustrated envelope to London bearing 1d red tied London CDS cancel. Pretty cover. **£ 60**
- 391** 1904 Horse Racing jockey on racing horse; pen and ink on hand coloured envelope to Wrexham bearing 1d red tied Willesden CDS cancel. Toned and torn, otherwise pretty cover. **£ 75**
- 392** 1904 Hunter in the field kneeling with his gun; pen and ink hand coloured watercolour on envelope to London bearing 1d red tied London CDS. Few tones on edges and tape residue on two corners, otherwise pretty cover. **£ 75**
- 393** 1904 Man with pipe and flat cap; pen and ink on envelope bearing 1d red tied London CDS cancel. Few tones on edges, otherwise pretty cover. **£ 85**
- 394** 1904 Military man walking away through long grass and address panel made into a painter's colour palette; pen and ink on hand coloured envelope to London bearing 1d red tied London squared circle cancel. Few tones on edges, hinge tear on one corner, otherwise pretty cover. **£ 100**
- 395** 1904 Monocled gentleman in top hat and tail holding a bunch flowers and smoking jack the lad behind him and train times at the bottom on postcard; hand coloured pen and ink to Shepherd's Bush Middlesex bearing ½d red tied London squared circle cancel. Mainly fine. **£ 85**
- 396** 1904 Pterodactyl holding the address panel; pen and ink hand coloured watercolour on envelope to London bearing 1d red tied London squared circle. Few tones on edges otherwise pretty cover. **£ 100**
- 397** 1904 Village scene pen and ink hand coloured watercolour on envelope to London bearing 1d red tied London squared circle. Few tones on edges otherwise pretty cover. **£ 80**
- 398** 1905 Dracula type figure; pen and ink illustrated envelope to London bearing 1d red tied London squared circle cancel. Few light tones otherwise pretty cover. **£ 100**
- 399** 1905 Fashionable lady head portrait; pencil on envelope to Middlesex bearing 1d red tied London 6 lined No.20 cancel. Few tones on edges, tape marks across two front corners, otherwise pretty cover. **£ 75**
- 400** 1905 Foxhound; pencil on illustrated envelope to Harrow bearing 1d red tied London 6 lined No.19 cancel. Few tones on edges, otherwise pretty cover. **£ 60**
- 401** 1905 Hunter with gun and a large moustache hiding behind tree with bear on the other side of the envelope emerging from the left; pen and ink on envelope bearing 1d red tied London CDS cancel. Few tones on edges, otherwise pretty cover. **£ 125**
- 402** 1905 Pyramid, and monkey riding an ostrich with palm tress desert scene; pen and ink on hand coloured illustrated envelope to London bearing 1d red tied Willesden CDS cancel. Few tape marks on corners otherwise pretty cover. **£ 100**
- 403** 1905 ROBEY (George Robey, singer and actor of the time) caricature illustrated in pencil on London envelope to Willesden bearing 1d red tied London 6 lined machine cancel. Few tones on edges, otherwise pretty cover. **£ 85**
- 404** 1905 Rossett train station with man carrying heavy trunk on his back; pen and ink on envelope to Wrexham bearing ½d pair tied Willesden CDS cancels. Few tones on edges, otherwise pretty cover. **£ 125**
- 405** 1906 Band Master with his mace; pen and ink in blue envelope to Willesden bearing 1d red tied London 6 line No.20 machine cancel. Light toning, otherwise pretty cover. **£ 75**
- 406** 1906 Chester Coat of Arms; pen and ink handcoloured in watercolours envelope to Willesden Green bearing 1d red tied London 6 line No.20 machine cancel. Light toning, otherwise pretty cover. **£ 100**

407 1906 Lady & Gentleman sitting in a tree; pen and ink handcoloured in watercolours envelope to Willesden Green bearing 1d red tied London CDS cancel. Light toning, otherwise pretty cover. **£ 125**

408 1907 Dragon in green and yellow; pen and ink on hand coloured envelope to London bearing 1d red tied London 6 line machine cancel. Few tones on edges, otherwise pretty cover. **£ 125**

409 1907 Fashionable lady head and bouffant hair; pen and ink on London & NW Railway Co. envelope to Wrexham bearing 1d red tied London 6 lined cancel. Few tones on edges, otherwise pretty cover. **£ 100**

410 1907 Fashionable lady head and shoulders stylishly dressed and pencil of mans head; pen and ink on envelope to Willesden bearing 1d red tied London 6 lined cancel. Few tones on edges, otherwise pretty cover. **£ 125**

411 1907 Fashionable lady head portrait; blue and black pen and ink on envelope to London bearing 1d red tied London squared circle cancel. Few tones on edges, otherwise pretty cover. **£ 125**

412 1907 Fashionable lady head with hat & bouffant hair; pen and ink on London & NW Railway Co. envelope to Wrexham bearing 1d red tied London 6 lined cancel. Few tones on edges, tape marks across the front corner otherwise pretty cover. **£ 75**

413 1907 Two laughing gentleman in tuxedos; pen and ink hand coloured watercolour on envelope to London bearing 1d red tied London machine 6 line cancel. Few tones on edges and tape residue on three corners, otherwise pretty cover. **£ 75**

414 Circa 1905 Around Thirty Four pen and ink hand coloured illustrated postcard sized cards all signed by J Farquharson around 1904-1908, huge range of different subjects including various ladies of fashion head and shoulder portraits, trumpeter, EDVII dated 17th Nov. 1904, shouting boy, beach lady, golfer, RH old man in red uniform, Waiter at Lyons tea room, lady walking her dog, woman beating up man 'Just like the ivy', Native African man in head dress, Billiards, etc, some have tape marks on corners and or toning, all unique and hand drawn and coloured. Joseph Farquharson was a Scottish painter chiefly landscapes mostly famous for his snowy winter landscapes. This formed part of an estate lot of illustrated commercial covers to a Miss Leadbetter in Rosett or London but those were unsigned. Fascinating and totally unique. **£ 1000**

GREAT BRITAIN - ISLE OF MAN

415 1985- 2008 Collection of Presentation Packs in 11 small albums plus a few other bits and bobs incl covers. Useful face value **£ 100**

416 Pre-stamp, two part Entire or E.L each bearing ISLE OF MAN single line, 1822 piece to London & 1824 Entire to Salop, faults and folds but both good strikes. **£ 20**

GREAT BRITAIN - JERSEY

417 1944 Views 3d violet on picture postcard of Munich bearing 3d tied JERSEY 5 MAY 1944 CDS with German FELDPOST Eagle datestamp alongside, typed addr sent locally. **£ 35**

418 1964-2000 Lighthouse luxury hingeless printed album in dark green well filled with mainly unmounted mint sets and partially complete incl some miniature sheets and sheetlets, great lot for expansion, good cat value. **£ 55**

GREAT BRITAIN - OFFICIALS

419 Government Parcels: 1883 9d green fine used neat CDS with a few toned perfs showing overprint break in top of P in Parcels variety. Accompanied by 2019 RPSP Certificate. SG Spec. L20, O63. Cat **£1200. £ 400**

GREECE

420 1861-1882 Classics assembly on seven album pages including 1861-62 Imperfs 21, 101, 201, 401 & 801 plus 201 blue on 1863 part cover (Scott \$110+), 1963-68 51, 101, 201, 401o & 801 (2), 1869-70 51, 101, 201, 1870 201 plus 201 blue on cover (Scott \$60), 1872-76 11, 51 & 401, 1876 301 brown (3) plus 1880 cover tied CDS (Scott \$40), 1876-82 good range of vales to 401, 1872 201 dark blue on cover (Scott \$67), etc. Attractive assembly with many nice copies. (Approx 37 + 4 covers). **£ 160**

421 1870 Greek P.O. in Turkey: Constantine Turkey to Syros. Attractive Entire to Greek Island bearing Greece Hermes heads 51 green overlapped with 401 tied 3 days later by SYROS 29 Aug CDS, with KONSTANTINE TOYPKIA 26 AUG CDS alongside, red crayon chargemark postage was paid to the destination. Fine. **£ 130**

GRENADA

422 1943 P.12 Narrow setting; 10s slate-blue and bright carmine mounted mint example, very fine gum, SG 163e, Cat **£750. £ 250**

423 SPECIMEN Overprints on twelve items incl QV ½d green, 1d red & 1½d brown single cards, 1d red & 1½d brown newspaper wrappers, 2d grey registered P/S env., EDVII ½d green and 1d red newspaper wrappers, GV 1d red card, GVI 1d purple env., 5c purple env., 4c red single card each with SPECIMEN diagonally across the centre in black on both sides. Nice group of 12 Specimen items. **£ 150**

HONG KONG

424 1940 Printed long cover from Japan to Burma bearing 20s & 30s defins tied Kobe CDS sent airmail to Rangoon via Hong Kong, bearing PASSED CENSOR / HONG KONG / 7 triangle in green twice, and on arrival in Rangoon PASSED CENSOR RANGOON / 23 in violet. Vertical fold does not detract, various backstamps. Nice commercial cover. **£ 65**

425 1949 UPU 80c bright reddish purple fine used corner CDS, showing Crack in Rock variety, pulled perf and tone otherwise hard to find variety, SG 176a. **£ 75**

426 1968 65c Flower in top left corner marginal block of 4 unmounted mint showing watermark inverted variety, slightly mottled gum otherwise fine, SG 253 aw. **£ 40**

427 Postcards: EDVII/GV nice group of postally used cards (5) including EDVII PPCs of Harbour from Kennedy Road (crease), Des Voens Road (creased), Wyndham Street & Flower Market, Public Gardens, Palms in Botanical Gardens, mostly have adhesives on obverse. (5). **£ 45**

428 Stamp Office: 1891 S.O overprint on 2c carmine with fine Victoria CDS cancel, superb, SG S1. **£ 125**

HUNGARY

429 1854-1903 Classics assembly on an album page incl two covers including 1872 E.L from SISSEK to Trieste with arrival b/s bearing 5k red (litho), then singles Litho 1871 set to 25kr used incl 3k green (Scott \$600), then engraved 3k green. Useful and attractive assembly. **£ 150**

INDIA

430 1937 10r purple and claret top marginal unmounted mint block of 4, even gum toning otherwise fine. SG 262. **£ 12**

431 1940 14a purple top value in an attractive left marginal unmounted mint block of 4, fine. SG 277. **£ 32**

432 Collection on leaves with useful including 1854 ½a blue (large 4 margins f.u. CIII cancel), 1a red (3 margins, 2 examples), 4a blue and red x 2 examples neatly cut to shape, 1860 8p used (2), 1855 6a fiscal with type 15 ovpt (Cat £150), 1865-68 to 8a used, 1874 1r slate used, 1876 12a venetian red used, 1882 set 11, 1895 QV 2r (2 shades cat £51), 3r brown and green (fiscal used?), 5r top value violet CDS's, 1911 GV to 25r used (Cat £140), 1926 low values in tete-beche mint blks of 4, 1926 to 25r used (25r top value slight stain, Cat £110), 1937 set used (Cat £140), mainly fine. (Approx 190) **£ 225**

433 Postal History, bundle of circa 1900 mainly postal stationery incl 2a registered letters uprated incl group of same correspondence from Ajmer or Ajmere 1899, Jodhpur City, Baksa-Doar, Sowgapett, Oodeypore-City, Mollarpur, Bikanir, c20 items. **£ 30**

INDIAN STATES

434 Convention States: Postal history assembly on leaves for 1940s GVI mainly used postal stationery cards noted 1942 Gwalior 9p (2), 1939 card with ½a & 3p adhs to DIDWANA, card with 9p adhs tied GWALIOR CDS, 1949 ½a P/S card uprated 3p grey tied SUDA MANDI CDS, Nabha 9p green, 1942 Patiala 9p green, 1890 Jind states, Native Nizams Dominions 6p red-brown, Indore native cvr, similar cover with advice of delivery form postmarked, Holkar state 1946 uprated P/S, three native covers with negative postmark cancel 1956 Jaipur etc, intr little group. (18). **£ 40**

435 Native states: Interesting little group of reprints and unissued types noted lovely Faridkot one with hooded F cancel, plus small stockbook with Native and Convention states mint and used for imperf and perf issues, (17). **£ 20**

IRAQ

436 1923 4a violet Camel Corps fine used CDS, showing Crown to left of CA variety, hard to find variety, SG 46w. **£ 100**

IRELAND

437 1922 2d orange Die II Thom overprint hinged mint showing watermark inverted variety, very fine, SG 13w cat £425. MW T16a. **£ 150**

438 1922 9d olive-green Thom overprint hinged mint showing PQ for POSTAGE variety, very fine, SG 41 var. MW T36a cat £500. **£ 160**

439 1922 Dollard 2/6 reddish brown, 5s rose-carmine & 10s dull grey-blue mounted mint Seahorses all with fine appearance, light tone on 10s gum, otherwise nice trio, SG 18, 19, 21 Cat £365. **£ 140**

440 1922 Dollard / Thom overprinted, defaced plate proofs corner sheet from a printed form showing 24 individual proofs on paper, 20 from Dollard printing, last row of 4 are Thom printings, small fold in top right corner, and light edge tone, unusual, philatelic? **£ 120**

441 Postal Orders: Twenty One different for circa 1967-1969 cashed without counterfoils postal orders in green and black for values 1s to 19s, condition varies some have stains or tears, each issuing postmark is different some cashed for Irish Girl Guides, Golden Goose etc, few are uprated with stamps. Nice lot, (21). **£ 100**

ITALIAN POST OFFICES ABROAD

442 China: 1917-18 Pechino; 2c brown mounted mint original gum showing overprint double variety, fine and sound, SG 10a Cat £900. **£ 300**

443 China: 1917-19 Tientsin mint assembly of 9 different vales mounted mint, noted 1917 Express 30c, 1918-21 surcharges 1c, 2c, 4c, 8c, 10c, 20c, 40c on 11, 1918 12c on 30c f.u. (Scott \$450) mainly fine appearance, Scott \$970. (9). **£ 250**

444 China: 1918-19 Postage Dues; useful assembly mainly mint on album page includes Pechino (Peking) 1917 set mint, 1918 surcharges 8c & 12c mint, 8c on 20c f.u., unissued bars and surcharge set 4. Then Tientsin 1917 set mint, then three values for unissued surch with bars, nice assembly of 18 stamps. **STC €770. £ 200**

445 General Issue: 1874-79 Classics assembly on an album page including Estero dopts on Italy 40c rose tied to very toned FRONT by 234 dotted cancel to Genova with TUNISI CDS alongside and PD h/s in black, (very toned, Scott \$200 as complete cover), then set of values 1c to 2l vermilion mainly used (Scott \$790), 40c rose is mint, 2l vermilion. (11 + 1 front). **£ 160**

ITALY

446 1863 Entire to London bearing King victor Emmanuel 15c blue (Type I) in two pairs tied CDS sent through Milan with various transit backstamps. London PD in red and London CDS in red on the obverse, faults but nice 60c rate to UK. **£ 40**

447 1863 Postage Due: 10c yellow affixed and uncancelled to Entire with CDS in place of stamp and postage due affixed. Well cut 4 margins, lovely cover. **£ 60**

448 1863-1878 Classics assembly on six album pages including 1863-77 set 10 to 2l used, plus 10c buff pair on cover 1865 surcharge x 3 diff printings plus one cover, 1867-77 10c on cvr tied nice 2615 numeral cancel, 1878 officials surcharge set used P. Due 1869 10c buff CDS used (Scott \$80), etc. Attractive assembly. (Approx 27 + 3 covers). **£ 55**

449 Express issues for different Italian areas mint on leaves including P.O in China Pechino 30c mint (Cat €35), Tientsin 30c mint (2 cat €70), 12c on 30c mint (Cat €280), P.O. in Turkey 15pi on 1.20l on 30c mint (Cat €44), Eritrea, Libia, Levante etc, nice assembly of 19 items, **STC €689. £ 180**

450 Italian Post Offices in Libya: Tripoli; 1909 Tripoli di Barberia overprint on 10 different values mounted mint (usual tropical gum) including 5c green (Cat £170), 1l brown and green (Cat £170), 5l blue and rose top value, mainly sound SG, 174/181, E182/3 Cat £460. **£ 150**

451 P.O. in Levant: Scutari; 1913 PPC of La guerre balkanique showing soldiers in a trench rifles at the ready, bearing 10pa on 5c green & 20pa on 10c rose both tied by black CDS cancels along with Montenegro 5pa green (Nicholas I) tied violet CDS on the obverse of the card. Very fine, seldom seen. **£ 40**

452 Post Offices in the Turkish Empire: Constantinople: 1908 8th Printing 45pi on 5l blue and rose mounted mint with hinge remains and usual streaky tropicalised gum, very fine and rare, SG 88 Cat £550. **Sassone 66. £ 180**

453 Post Offices in the Turkish Empire: Constantinople: 1908 Second Printing (20 Narrow) 20pi on 5l blue and rose mounted mint with hinge remains and usual streaky tropicalised gum, very fine and extremely rare, SG 46 Cat £6500. Certificate extension permitted. **Sassone 14 (Only 200 printed). £ 2400**

454 Post Offices in the Turkish Empire: Constantinople: 1922 Express 15pi on 30c blue and rose neatly used 7.12.22 COSTANTINOPOLI central CDS, very fine and scarce, SG E100, Cat £900. **£ 350**

455 Post Offices in the Turkish Empire: Durazzo: 1909-11 Mounted mint set of right all hinged mainly fine incl key 20pi on 5l blue and rose (Cat £325, SG 115), nice set, SG 109/116 Cat £375. **£ 125**

456 Post Offices in the Turkish Empire: Jerusalem; 1909 Complete set of eight mounted mint, with usual gum tropicalisation, all fine frontal appearance, key 20pi on 5l is centred NW, 40pi on 10l has pulled perf, huge catalogue value set, SG 125/132 Cat £1330+. **£ 275**

457 Post Offices in the Turkish Empire: Jerusalem 1909-11 Jerusalem 20pi on 5l blue and rose part original gum (tropicalised with hinge remains), off blunt perf but otherwise a scarce stamp, SG 131 Cat £1300. **£ 300**

JAMAICA

458 SPECIMEN Overprints on Queen Victoria (2), EDVII (4), GV (3), GVI (5) postal stationery cards and registered envelopes. Includes QV 1d blue reply paid card printed Specimen diagonally on both parts, 1d blue card, EDVII 1d red reply card, 1d red & two ½d green single cards, GV ½d green and 1d red singles, 1d red reply card, GVI ½d green reply card overprinted on one piece only, 1d red reply card, 6d Air letter, 1d yellow-brown registered P/S env. Nice group of 14 items. **£ 160**

KENYA, UGANDA & TANG. (K.U.T.)

459 1935 Silver Jubilee 1s slate & purple CDS used showing line through 0 of 1910 variety, SG 127l. **£ 65**

460 British East Africa: 1896-1901 1a carmine-rose fine used showing watermark reversed variety, very fine, SG 66x. **£ 85**

461 East Africa & Uganda Protectorates: 1903-04 EDVII Mint set to 5r, 1907-08 set 9 mint neatly arranged on printed album page. SG 1/13, 34/42 Cat £770. **£ 300**

KUWAIT

462 1923-24 3a dull orange in gutter single unmounted mint, showing overprint inverted variety, see SG footnote after SG15. SG 6 var. **£ 30**

LEEWARD IS.

463 1890-1902 QV Printed album page with mint assembly including 1890 set of 8 (Cat £190), 1902 set 3 surcharges, a few p/s cut outs etc. Nice little lot, Cat £231. (18). **£ 85**

464 1902-11 EDVII Printed album page with mint assembly including 1902 set to 1s (Cat £51), 1905-08 set of 7 (1d & 2½d are used, Cat £150), 1907-11 set to 2½d (Cat £30). Nice little lot, Cat £231. (24). **£ 85**

465 1912-1935 GV Printed album page with mint assembly including 1912-22 Set to 2/6 (Cat £83), 1921-32 15 vals to 1s (Cat £100), 1935 Silver Jubilee set (Cat £35). Nice little lot, Cat £218. (36). **£ 75**

466 1938 Chalky 10s bluish green and deep red on green in attractive unmounted mint PAIR, fine, SG 113 Cat £400 mint. **£ 160**

467 SPECIMEN Overprints on four GVI postal stationery envelopes (3) and a card. Includes GVI ½d green on buff card with SPECIMEN diagonally across the centre in black, 1d red (2 types, one has tones), 1½d brown envelopes with SPECIMEN ovpt diagonally in smaller type. Nice group of 4 Specimen items. **£ 48**

468 SPECIMEN Overprints on four Queen Victoria postal stationery cards and newspaper wrappers. Includes QV 1½d brown reply paid card printed Specimen diagonally on both parts, 1½d brown single card, ½d green & 1d red newspaper wrappers with SPECIMEN diagonally across the centre in black. Nice group of 4 Specimen items. **£ 48**

469 SPECIMEN Overprints on three Queen Victoria postal stationery cards and newspaper wrappers. Includes QV 1d red reply card, ½d green & 1d red newspaper wrappers with SPECIMEN diagonally across the centre in black. Nice group of 3 Specimen items. **£ 36**

LIBERIA

470 Proofs perf and imperf attractive small range 1952 Carry, Ashen & Careysburg imperf for seven different hinged mint values to 50c without vignette with frames in issued colors, 1953 Birds triangles for 5 different showing color separations mint. (12). **£ 60**

LITHUANIA

471 1990-2005 An extensive used (all nice postmarks off FDCs) collection in a well filled Lindner printed album, dozens of commem sets, miniature sheets, large and small sheetlets, defines, machine labels with plenty to go through noted 1990 Angel and Map set in sheetlets of 16 (Cat £76), 2003 Aviation sheetlet of 20 (Cat £24), 2004 Zoology sheetlet of 20 (Cat £22), 2005 Endangered Species M/S of 8 (2), nice lot for expansion. Approx 325+. **£ 150**

LOMBARDY & VENETIA

472 1863 Wrapper from Venice to San Martino Dall'Argine (Lombardy) bearing TWO 1859 3 soldi green (SG 18B Cat £150 each) and 1861 10 soldi brown (SG 26 Cat £65) all tied individually with Venezia cds and expertised in pencil below stamps. Roughly opened on reverse and two vertical filing creases that do not affect the stamps plus some very slight age wrinkling, but a truly fine looking and scarce item that would grace any display **£ 280**

LUXEMBOURG

473 1859-1881 Classics assembly on four album pages including 1859-64 set of nine values to 40c red-orange (Scott \$2295), 37½c green on entire Wiltz to Main (not tied) (Scott \$1400 on tied cover, 4 margins \$200 as used single), 1865-73 Rouletted 1c red-brown (Scott \$240), 1865-74 coloured roulette vals to 40c orange, 12½c rose on cover (faults), 1875-79 set to 25c, 40c, 10c grey on cover, etc. Attractive assembly. (Approx 34 + 3 covers). **£ 325**

474 1860 2c black superb fine used CDS example with 4 good to large margins especially top and bottom, very nice for these, SG 7 Cat £900. **£ 225**

475 1874-1879 Perf Classics assembly mainly fine used and few mint incl 5c yellow (2), 10c lilac (3), 12½c red, 25c blue (3), used 1c brown (6), 2c black (3), 4c green (4), 5c yellow (6), 10c (e25), 12½c (5), 25c (7), 30c rose, 40c orange (4) etc, variety of different types and printings, some faults, thins etc but taken 'as is', good cat value. Approx 75. **£ 200**

MALAYAN STATES

476 Japanese Occup. of Malaya: Kelantan remainders, two surcharge values without red Jap. ovpt incl 8c on 5c red-brown and 1 Cents on 50c mint (closed tear), both remainders without the red Seals, (2), see footnote after SG J44. **£ 20**

477 Japanese Occupation: 1942 (Nov) Selangor Agri-horticultural exhibition unaddressed plain toned cover bearing set of two Straits Sett. 2c orange and 8c grey tied by special KULA LUMPUR EXHIBITION CDS cancels. Light tones otherwise very scarce, SG J90/1. Cat £50 as used stamps, rated £750 for commercial use. **£ 60**

478 Japanese Occupation of Malaya: Kelantan 1942 Sunagawa seal in red surcharged 50c on 1c grey-olive and yellow mounted mint with heavy hinge remains, scarce and rarely offered, SG J27 Cat £2500. **£ 650**

479 Japanese Occupation of Malaya: Trengganu 1942 (Sept) five different used values with overprint types 1, for 1c black (SG J97, cat £110), 2c green (SG J98, cat £160), 5c, 8c & 30c, fine used. Neatly arranged on album page. (5). **£ 125**

480 Old time collection from some earlier with strength in 1940s-60 issues from different states, Singapore GVI to \$2 m & u diff perms, FMS incl Tiger to 50c used, Perak Tiger to 50c, 1940s omnibus incl 1949 UPU sets m & u, other vals to \$5. Approx 300. **£ 60**

481 Pahang: Japanese Occupation 1942 DAI NIPPON / 2602 / MALAYA overprint on 25c dull purple on scarlet (thin striated paper), in a superb bottom imprint marginal sheet of 50 with plate No.1 and De La Rue imprint both in purple. Scarce multiple. SG J244 Cat \$450 mint. **£ 300**

482 Perak: 1938-41 Complete set of 19 mint each perfined arched SPECIMEN set to \$5, mostly fine, few with tropicalised gum, nice set, SG 103s/121s Cat £650.

£ 300

483 QV to 1970s Collection mint and used in album in mixed condition with good range of early to 75c used, 30c mint, surcharge m & u, EDVII to R2 used, GV incl mint vals to 50c incl 30c & 50c pairs mint, to R2 used, 1935 to 50c mint, 1890 Postal Commission 3c on 4c rose, or 3c on 4c purple mint (Barefoot 3/4). Intr lot, 100s.

£ 60

484 Straits Sett.: 1939 Die II 5c brown in a vertical pair right side marginal mint / unmounted mint with usual gum, very fresh pair, SG 297.

£ 32

MALTA

485 1859 (27 Aug) Entire Letter from Malta to Genova from Italian business bearing GB 4d rose tied full strike of MALTA A25 cancel with trade h/s, PD in black circle and crayon 1¼ mark in red. Usual folds, attractive cover. SG Z47.

£ 120

486 1882-1979 Mainly mint collection in Davo luxury hingeless printed album mixed mint and used for earlier to 1940s noted 1938 set to 10s mint, 1947 Self Govt set to 10s mint, 1935 SJ set mint, 1930 to 2s mint, 1926 to 1s mint, 1922 to 1s, EDVII to 1s m & u, Postage due sets and ranges, pencil annotations on pages otherwise fine lot for expansion.

£ 220

487 Sovereign Military Order of Malta - Poste Magistrali stamps issued in Rome, U/M assembly of miniature sheets and sets incl 1975-6 Miniature sheets (3 diff), then 1975-77 nine U/M sets plus earlier Segnatasse overprint set of 10. Uncatalogued. Fine (51 + 3 M/S).

£ 18

MAURITIUS

488 1950 10r dull blue in a magnificent vertical block of eight fine used REGISTERED / PORT LOUIS MAURITIUS CDS cancels, split perfs along bottom pair otherwise fine, SG 290 Cat £384.

£ 125

489 SPECIMEN Overprints on Queen Victoria, EDVII, GV (2), postal stationery cards & envelopes. Includes Arms 6c, 10c, 12c, 12c red registered P/S env., GV 3c lilac, 20c blue registered P/S env., few tones otherwise nice group of 6 items.

£ 75

MOROCCO AGENCIES

490 1906 Wmk MCCA 25c purple and black on blue in bottom marginal and side gutter mint / unmounted mint, pencil inscription on margin, two stamps unmounted min, SG 27 Cat £280 for mint.

£ 175

491 French Currency: 1917 5centimes on ½d green unmounted mint sheet of 120 with bottom left block of 4 missing, SG 192.

£ 25

492 Useful collection QV to 1957 with better throughout on large leaves, noted 1898-1900 QV ovptd 50c, 1p & 2p mint (Cat £75), 1899 to 50c m & u (Cat £70), 1905 EDVII 50c, 1p & 2p mint (Cat £95), 1925 set to 1s mint (Cat £55), 1907 to 1s mint, 1949 set 17 (Cat £85), 1935-37 2/6 & 5s mint (Cat £90), 1951 set 7 mint (Cat £38), Spanish Currency; 1907-12 to 6p on 5s mint (Cat £80), two nice combination pieces used, French Currency to 6p on 5s mint, 1948 RSW set m, Tangier 1948 RSW set m, 1949 set, 1950 set mint, 1955 QEII Castles mint, 1957 set to 10s mint, mainly fine, good cat value (STC £1900). Nice collection ideal for expansion. (Approx 420).

£ 600

NATAL

493 1902 Postage & Revenue £1.10s green and violet cancelled nice DURBAN 22 FEB NATAL CDS, cancel, good strike. SG 143.

£ 60

NETHERLANDS - COLONIES

494 Netherland Indies: Useful group of sixteen covers including better noted 1940 10+5c surch FDC to USA Censored, airmail from Batavia, Tobelo, Brastagi, 1940 Red Cross airletter from Medan to Geneva (censored), 1937 Tatty cover to Ascension Island (no arrival b/s), 1904 PPC from Cheribon, 1913 uprated 5c airmail P/S card, 1903 PPC to Adana, etc, mixed but interesting group. (16).

£ 120

NEW ZEALAND

495 1898 No Wmk P.14½ x 14.75 5s vermilion very fine mounted mint example, well above average for these, very fresh, SG 259.

£ 125

496 1899-1903 No Wmk P.11 2s blue-green & 2s grey-green both mounted mint with usual rough perfs, sound & very fresh, SG 269, 269b.

£ 100

497 1931 Health 2s + 1d blue Smiling Boy mounted mint single with toned gum, fine appearance, SG 547.

£ 25

498 1931 Health set of two Smiling Boy mounted mint, fine, SG 546/7.

£ 62

499 Large lever arch binder: enormous both mint and used from QV Chalon imperfs 2d blue (3), perf Chalons 1d vermilion (4), 1d brown, 2d blue (3), 4d yellow, 6d red-brown (8), QV heads to 1s, Stamp Duty to £1, 1898 onwards to 2s, EDVII to 1s, GV mint to 1s, 1920 Victory mint & used, airs, Health's from 1935 onwards, GVI to 3s, QEII to 10s, double collection with dozens of defin and commem sets for QEII, arranged mint and used collection duplicated throughout, very mixed but good cat value and huge quantity.

£ 150

500 Postal Orders: 1979 attractive group of £2 Great Britain Postal orders overprinted NEW ZEALAND used without counterfoil at Heroics and Ros Figures London, includes issued at HOKITIKA (2 diff), different coloured cancels for University of Auckland (11), BIRKDALE (3), Christchurch, mainly fine, intr group. (17).

£ 60

NEWFOUNDLAND

501 1911 Prince Henry 6c IMPERF PROOF in black on thick card, neatly cut round, very fine. SG 122 var.

£ 75

NIGER COAST PROT.

502 Oil Rivers: SPECIMEN Overprints on Queen Victoria 1d red single card, 2d grey & 2d light grey registered postal stationery envelopes in two different sizes, tones on 1d, otherwise fine.

£ 45

NIGERIA

503 Jumbled loose duplicated ranges 100s stashed in envelopes includes GVI low value definitives, QEII 1960s heavily duplicated pictorial definitives, possible postmark interest etc, 1000s in smaller box.

£ 30

NIUE

504 1933 (12 Oct) Long printed OHMS cover (creases) to Canada bearing 1932-6 five different values ½d, 1d, 2d, 2½d, 6d pair tied NIUE CDS cancels with R 74 etiquette, SG 62/5, 67 Cat £159 on cover.

£ 40

NORFOLK IS.

505 1970 Birds 45c Norfolk Island Starlings a beautiful full colour imperf proof on Harrison & Sons Ltd presentation card. Very attractive ideal for Birds thematic collection, unusual. SG 115.

£ 45

NORTH BORNEO

506 1888-92 IMPERF PAIRS mint / unmounted mint 'set' of eight imperf gummed pairs (some marginal) from ½c to 10c, 3c has thinning, otherwise fine, SG 36c, 37b, 38c, 39b, 40b, 41b, 42a, 43c, 44d. Cat £455.

£ 175

NORTHERN RHODESIA

507 1938-52 Complete set of 21 hinged mint, very fresh to 20s, SG 25/45.

£ 75

NORWAY

508 1856-1878 Classics assembly on six album pages including 1856-7 set of four to 8s f.u. (Scott \$365), 4s blue on entire letter, 1863 set of five to 24s f.u. (3s has clipped corner), Scott \$463) plus 4s on cover from Levanger, 1867-68 set to 8s (short corner, Scott \$345), plus 4s blue on 1870 cover, 1871-75 Posthorn set to 7s (Scott \$285), 3s red x 4 on cover, 1882 50 P/S card updated 50 blue to Berlin, 1877-78 set to 2k (Scott \$414), etc. Attractive assembly. (Approx 43 + 5 covers).

£ 200

509 1930 (20 Aug) Tourist Association Fund set of 3 on real photo type of the North Cape and liner similar design used for the stamps, tied NORDKAPP / LE CAP NORD CDS cancels, unaddressed a little soiled from gum tones. SG 223/5 Cat £185 used singles.

£ 150

NYASALAND

510 1936 (Apr) Registered cover to Guernsey bearing 1935 Silver Jubilee set tied BLANTYRE CDS'S, regd etiquette No. 421. Typed addr.

£ 32

511 SPECIMEN Overprints on five postal stationery cards and registered envelope. Includes BCA Arms ½d black and yellow single card, 1d black single card, ½d blue-green frameless card, 1d red Arms newspaper wrapper, Four Pence embossed arms regd env, each with SPECIMEN diagonally across the centre in black. Nice group of 5 Specimen items.

£ 65

512 SPECIMEN Overprints on four postal stationery cards and newspaper wrapper. Includes BCA Arms ½d black and yellow single card, 1d black single card, ½d blue-green frameless card, 1d red Arms newspaper wrapper, each with SPECIMEN diagonally across the centre in black. Nice group of 4 Specimen items.

£ 48

513 SPECIMEN Overprints on six postal stationery cards and registered envelopes. Includes BCA Arms ½d black and yellow single card, 1d & 2d black single cards, ½d blue-green frameless card, 1d red Arms newspaper wrapper, Four Pence embossed arms regd env, 4d blue EDVII embossed head each with SPECIMEN diagonally across the centre in black. Nice group of 7 Specimen items.

£ 100

PAPUA

514 1935 (8 May) Registered long cover Moresby to Canada bearing 1934 Declaration 2d & 5d tied PORT MORESBY CDS cancels, Regd No.10032, good range of backstamps incl KAMLOOPS & Heffley Creek CDS in Canada, few bends around the edges, nice commercial use. SG 131, 135. x4 on cover.

£ 48

PAPUA & NEW GUINEA

515 1964 Birds 6d Lawes's Parotia a beautiful full colour imperf proof on Department of Posts & Telegraphs presentation card. Very attractive ideal for Birds thematic collection, unusual. SG 64.

£ 45

PITCAIRN IS.

516 1940-1988 Collection of mint and unmounted mint in a Lindner hingeless printed album with good degree of completion 1940 onwards including GVI set, 1948 RSW 10s mint, 1949 UPU, 1953 set, 1967 set, sparse to 1990, clean lot, ideal for expansion.

£ 100

517 1985 \$2 Painting unmounted mint bottom marginal imprint showing Questa balloon colour cylinders, showing 1835 date error variety, very fine, SG 267 var.

£ 35

518 1985 \$2 Painting unmounted mint showing 1835 date error variety, very fine, SG 267 var.

£ 30

POLYNESIA

519 1958-1989 Extensive unmounted mint collection in a Lighthouse loose-leaf binder with hingeless printed leaves, high degree of completion for commem sets, miniature sheets, airm and postage issues with good catalogued sets throughout, still spaces to be filled, ideal for completion, attractive collection of modern issues. Enormous cat value. **£ 1250**

520 1991-2009 Extensive unmounted mint collection in a Lighthouse loose-leaf binder with hingeless printed leaves, high degree of completion for commem sets, miniature sheets, airm and postage issues with good catalogued sets throughout, still spaces to be filled, ideal for completion, attractive collection of modern issues. **£ 600**

521 2010-2012 Extensive unmounted mint collection in a Lighthouse loose-leaf binder with hingeless printed leaves, high degree of completion for commem sets, miniature sheets, airm and postage issues with good catalogued sets throughout, then useful range of 1980s sheetlets of 10 to modern with high catalogue values, machine self-adhesives labels and even prestige booklets, self-adhesive panes etc, still spaces to be filled, ideal for completion, attractive collection of modern issues. **£ 650**

522 Balance of a substantial collection on three large stockpages including unmounted mint sets, imperfs, booklet panes, note amongst others 1988 Sydrex 60f sheetlet of 10 (Cat £57), 1988 Death Abbic. 350f, 1958 vals to 200f, 1971 Water Ski set 3 (Cat £43), then a few epreuve de luxe cards incl 1965 Underwater Swimming 50f design printed in brown and signed in pencil. Nice little collection. **£ 120**

PORTUGAL

523 1855 King Pedro V 5r red-brown a superb large four margin example with 52 numeral barred cancel of Porto struck across the centre, accompanied Miranda Da Mota expertising 2015 certificate, Afinsa cat No.5. Premium example! **£ 250**

524 1855-1894 Classics assembly on eight album pages including 1855 50r green (3 margins), 100r lilac (3-4 margins), 1856-58 5r, 25r (2 dies), 25r plus 25r red on entire letter BRAGA to Porto, 1862-64 5r, 10r, 25r, 50r & 100r, with 1866-67 King Luiz curved labels Imperf set to 120r (Scott \$468), 25r red on cover, 25r red tied to E.L. FIGUEIRA to Porto, 1867-70 Perf issue set to 240r (Scott \$1100), etc. Attractive assembly. (Approx 48 + 5 covers). **£ 300**

RHODESIA

525 1892-1901 Three high values fiscal used and perfined each with nice appearance incl 1892 £5 sage-green (SG 12), 1898-1901 £10 lilac (SG 93) & £20 yellow-bistre (SG 93a). Mainly sound. **£ 75**

526 1909-12 Rhodesia overprint on arms complete set to £1 mint used including used CDS ½d to 4d, 1s,5s, 7/6 & £1 (Cat £274), mint 6d, 2/6, 3s & 10s (Cat £165), mainly all sound. **£ 100**

RHODESIA & NYASALAND

527 1954 (17 Aug) Envelope bearing 3d red tied two line OLD MKUSHI handstamp in black with normal CDS postmark underneath, nice philatelic item, typed addr to George King UK. **£ 12**

RUMANIA

528 1868-1879 Classics assembly on eight album pages including 1868-70 2b, 3b, 4b & 18b fu. 3-4 margins (Scott \$157), 1869 5b to 50b imperf mainly 4 margins (Scott \$191), 1871-72 5b, 10b, 15b & 25b (3-4 margins Scott \$360), 1872 10b, 1872 perf set 3 (Scott \$152), 1872 Paris Print set to 50b used (Scott \$95), 1876-79 to 50b etc. Attractive assembly. (41). **£ 160**

RUSSIA

529 1858-1879 Classics assembly on five album pages incl four covers including 1862 cover (faults) nearing 10k brown and blue (p.12½), Scott \$160), 1865 10k on cover, 1866-75 set to 30k, plus combination cover 5k & 10k to Geneva (faults), 1875-82 7k to 20k plus 8k on cover etc. Attractive assembly. Approx 18 + 4 cvrs. **£ 75**

530 1922 American Famine Relied; tow printed postcards one with stamps missing, other with combination 7500 on 250r and two 250r imperfs tied MOCKBA CDS cancel, faults. Card to support delivering packages of American foodstuffs during the 1921-22 famine in Russia. **£ 36**

531 Post Offices in China: Russia 10k blue and surcharged for China 10 Cents on 10k blue (3) making a nice mixed franking on paper tied with two double ring oval cancels of VLADIVOSTOK and SHANGHAI, seldom seen. **£ 80**

532 Post Offices in the Turkish Empire: Mount Athos 1891 cover bearing Russian 10k blue adhesive tied with dated cds with the letter/message written on the front of the cover with many transit markings on the reverse and then a 'Letter charge sheet' for the Russian Agency Co on grey paper then attached to the reverse. Cover and sheet are in very fine condition. Really interesting item that requires further specialist research. **£ 80**

SAINT HELENA

533 1902-08 EDVII Fine used group incl. 1902 set 2, 1908-11 set to 10s, with 2½d to 6d nice CDS, 10s green and red on is CDS used but green has washed so not counted (Cat £350 used), SG 53/4, 64/70. (6). **£ 42**

534 1903 Govt House and The Wharf two top values 1s & 2s CDS used, sound, SG 59/60. **£ 42**

- 535** 1908 EDVII 10s green and red on green mounted mint, few tone spots on gum but does not detract from very fresh frontal appearance, SG 70. **£ 120**
- 536** 1912-16 Complete set of 10 to 3s mounted mint, 2d has short corner, 2s has tones on gum, 3s top value very fine and fresh, nice clean set, SG 72/81. **£ 50**
- 537** 1912-16 Fine used assembly of five different values 1d, 2d, 8d, 1s (marginal) & 3s top value, all nice CDS with decent cancels, SG range 73/81. **£ 105**
- 538** 1922 1d gray and green fine mint block of 4 with bottom left stamp showing cleft rock variety which is unmounted mint, torn corner on bottom right stamp but does not detract, SG 98/98a. **£ 42**
- 539** 1922-37 Wmk MCA 4d gray & black on yellow block of four with bottom stamps unmounted mint, superb and fresh, SG 92. **£ 26**
- 540** 1922-37 Wmk MSCA 1½d rose-red bottom left corner marginal plate number pair with left stamp showing cleft rock variety, variety is mounted mint, other U/M, small hinge mark on margin otherwise, fine, SG 99c. Nice positional piece. **£ 40**
- 541** 1922-37 Wmk MSCA 1/6 gray and green on green a superb bottom marginal block of four unmounted mint, superb and fresh, each stamp signed in pencil on reverse. SG 107., SG 99c. Nice positional piece. **£ 65**
- 542** 1922-37 Wmk MSCA 1d gray and green fine used showing cleft rock variety, fine, SG 98c. **£ 40**
- 543** 1922-37 Wmk MSCA 2d gray and slate fine used showing torn flag variety, fine, SG 100b. **£ 150**
- 544** 1922-37 Wmk MSCA 7/6 grey-brown and yellow-orange very fine used sock on the nose JY 19 1922 CDS, fine, SG 111. **£ 110**
- 545** 1922-37 Wmk MSCA Complete set of fifteen to 10s gray and olive-green mounted mint, some hinge remains or toned gum, many very fine and fresh including 2s-10s top five values, SG 97/112 **£ 175**
- 546** 1922-37 Wmk MSCA ½d to 2s mostly complete for 11 values, all fine used on minor fault on low values (6d has thinned corner), 1s, 1/6 & 2s are very fine, SG incl. 105/108. **£ 65**
- 547** 1922-37 Wmk MSCA Madam Joseph postmark forgeries on 2/6 & 5s values, both with DE 18 27 CDS cancels. SG 109/110. Cat £175 as genuine cancels. Nice reference. (2). **£ 30**
- 548** 1934 Centenary of British Colonisation short set to 5s including ½d to 1s complete then 5s lightly mounted mint, SG 114/120, 122. **£ 45**

- 549** 1948 Royal Silver Wedding set of two fine used CDS, SG 143/4. **£ 15**
- 550** 1960 Marine Life complete set to 10s fine used nice CDS cancels, SG 28/41. **£ 36**
- 551** Balance of an auction lot with duplicated mint and used arranged on Hagner includes 1856 6d blue (2 margins cut into, cat £225), 1861 6d blue (rough perf used Cat £150), 1863 1d lake imperf unused (Cat £150), 1864-80 Wmk CC range incl 1d lake f.u., 4d carmine, 1s deep green, 1884-94 good range of values to 1s m & u, some tones or faults but nice assembly. (38). Some shades, useful group with good cat value. **£ 100**

SAINT KITTS

- 552** Nevis: Revenue; 1883 1d mauve, 4d blue and 6d green all mounted mint, 1d has short corner, nice trio, Barefoot 19/21. **£ 35**

SERBIA

- 553** 1944 (20 Oct) Sent Provisional issue to commemorate the liberation of the city, overprinted in black with red star on Hungarian diff nine values mint SG R63/69, R71/2. Scarce. (9). **£ 300**

SEYCHELLES

- 554** 1901 3c on 36c brown and carmine showing surcharge double variety, incredibly toned gum otherwise fine appearance, SG 39a, Cat £750. **£ 75**

SIERRA LEONE

- 555** SPECIMEN Overprints on four GVI postal stationery cards and registered envelopes. Includes 3d brown registered envelope, Embossed envelopes 1d orange and 2d purple, ½d green newspaper wrapper each with SPECIMEN diagonally across the centre in black. Nice group of 4 Specimen items. **£ 48**
- 556** SPECIMEN Overprints on four Queen Victoria, two EDVII, four GV postal stationery cards and registered envelopes. Includes QV ½d green reply paid card printed Specimen diagonally on both parts, ½d green single card, ½d green newspaper wrapper, 2d grey Registered envelope, EDVII ½d green card, ½d green reply card, George Fifth ½d green reply card, ½d green single card, 1½d red single card, ½d green newspaper wrapper each with SPECIMEN diagonally across the centre in black. Nice group of 11 Specimen items. **£ 130**
- 557** SPECIMEN Overprints on three Queen Victoria, four EDVII, two GV & one GVI postal stationery cards and registered envelopes. Includes QV ½d green reply paid card printed Specimen diagonally on both parts, ½d green single card, ½d green newspaper wrapper, EDVII Registered 2d grey small size P/S env., ½d green and 1d red cards (faults), 1d red reply card, George Fifth ½d green reply card, ½d green single card, GVI 1½d red with SPECIMEN diagonally across the centre in black. Nice group of 10 Specimen items. **£ 100**

SINGAPORE

- 558** 1948 Royal Silver Wedding \$5 fine used, SG 32. **£ 20**
- 559** 1988-2014 Complete Year books of six different, each book complete with unmounted mint year sets & miniature sheets, all special issues made each year for 1988, 1989, 1996 2001, 2006 & 2014, useful catalogue value. Lovely lot, high original retail. (6). **£ 130**

SOMALILAND PROTECTORATE

- 560** Balance of an auction lot with mint and used arranged on leaves includes 1903 QV values to 1r m, 3r mint (2, cat £70), 1903 bottom ovpt to 1r mint, EDVII to 8a mainly mint, 1904 ½a to 12a mint, 1905 to 12a m & u, GV various printings with vals to 1r, 2r, 3r mint, to 1r used, 1935 SJ set mint (3), jumbled assembly. **£ 160**

SOUTH AFRICA

- 561** 1980's Twenty-one government covers posted off shore in various world locations. Includes 1982 posted at sea from the MV SA Agulhas at Gough Island, 1980 South African National Antarctic Expedition, 1978 Department of Weather Office South Atlantic and 1983 Emergency Causality Evacuation from Marion Island. Very interesting collection. **£ 85**
- 562** Balance of ex auction lots with mint and used arranged on stockcards and leaves includes P. Dues, 1914 onwards, some in mint or U/M blocks 4 or 8, 1930s definitives and commemoratives in mint pairs to 1s, 1913 to 10s used (2), officials to 1s mint, etc, jumbled assembly. **£ 65**

SOUTHERN NIGERIA

- 563** SPECIMEN Overprint on EDVII ½d on 1d red surcharge single card. Sound. **£ 15**
- 564** SPECIMEN Overprints on Queen Victoria 1d pink env., 1d carmine single card, 2d blue registered env., EDVII ½d on 1d red surcharge single card, 1d red reply card, few tones otherwise nice group of 4 items. **£ 60**

SPAIN

- 565** 1851-1879 Classics assembly on twenty five album pages of covers and stamps including 1851 6c black on E.Letter (Scott \$32), 1852 12c lilac (Scott \$150) plus 6c rose on cover, 5r green (Scott \$100), 1853 6c on cvr, 5r green (Scott \$130), 1854 6c carmine on cvr, 1855 2c green used (Scott \$140), 1r & 2r (bar cancels), 1859 12c orange (bar cancel Scott \$55), 1860-61 12c carmine on cvr (Scott \$47), 1864 to 2r CDS cancels, 1865 12c blue and rose on cvr (Scott \$80), 1r, green, 2r (2 shades), 1865 perf 12c on paper, 1r green f.u. (Scott \$525), 2r dull orange heavy used (Scott \$350), 2r violet (Scott \$250), 1866 2c-19c (Scott \$570), 1866 10c green, 20c lilac, then many 1860s-70s issues incl on cover, 1879 10p bistre used (Scott \$175), etc. Attractive collection with many nice copies. (Approx 95 + 24 covers). **£ 500**

566 1865 Isabella II 19c brown and rose fine four margin imperf example tied to paper with incomplete CDS, rubbed at bottom left corner otherwise sound, two violet expertising handstamps on reverse, key example, Scott 70 (\$600). **£ 150**

567 1930 Air Spanish-American Exhibition 1p purple key value unmounted mint, fine, SG 649 Cat £150. **£ 30**

568 1950 General Franco's Canary Islands Visit 10c on 25c brown-purple very lightly hinged mint with bottom marginal with control figures on reverse. SG 1151 .Cat £750. Scarce. **£ 275**

SPAIN - CIVIL WAR ISSUES

569 ASTURIAS Y LEON set of five imperf souvenir sheets un gummed each with design of five 5c stamps depicting ships in different colours, other four sheetlets the central stamp is charged 25c, 45c, 60c & 1pta. All fine, scarce. **£ 85**

570 EL MASNOU Imperf Souvenir Sheets (2 different) mint part og or unmounted mint commemorating 1934-1937 Comunicaciones, Consell Municipal, both fine frontal appearance. Allepuz 27 & 35. **£ 50**

571 Extensive civil war stamp issues, a huge collection on stockbook pages with an enormous variety of different areas, includes stamps, miniature sheets both perf and imperf, mint and used, noted Cordoba, Barcelona, Tafalla, Bilbao, Lorca Murcia, Alicante, Villacarlos Anti Fascista, Novelda, Alayor, Orihuea, Campillos Malaga, Villanueva del Trabuco, Rodrigo, Alhama de Granada, Huesca, Avila, Las Palmas, Moguer, Moncada and Reixac, Riudor de Bages, Cristina, Jose Antonio, Santa Cruz Tenerife, Talavera, Coruna, Requetes, Segovia, D'Alcover, Montblanc, Tarragona, Nerja, Cupon Pro Refugiados, plus dozens and dozens more, a lifetimes work, approx 900+ examples, some duplication but hard to put together lot, ideal for further expansion. Enormous retail of €4800++. Mostly listed in Allepuz. **£ 2500**

572 FOYER DU FRANCAIS Perf & Imperf Souvenir Sheets (2 different) un gummed Foyer De Francais Antifasciste Comissariat de Propaganda de la Generalitat de Catalunya, both fine frontal appearance. Both numbered. **£ 50**

573 FOYER DU FRANCAIS Perf sheetlets of 4 with margins all round for seven different values Anti Fasciste 10c to 50c depicting different personalities related to the period, scarce in miniature sheets of 4. (28 stamps). **£ 200**

574 MONTCADA I REIXAC - c1937 Four imperf miniature sheets of 4 for Montcada (Near Barcelona) charity Funds depicting railway, bridges, etc, each numbered separately. Mainly unmounted mint. High retail €300+. (4). **£ 180**

575 NERJA Imperf Souvenir Sheets (2 different) mounted mint 1st Anniversary Saludo Franco & Asistencia Social numbered imperf M/S, fine appearance. **£ 35**

576 REQUETE Souvenir Sheet mounted mint issued 7th January 1938 commemorating 1833-1937 with four stamps 10c to 1pta in different colours, brownish gum, plus single imperf 1pta brown souvenir sheet unused on white paper Galvez 8 & 18. Scarce. **£ 60**

577 RICON DE LA VICTORIA Imperf Souvenir Sheet unused printed on reverse 5c x 4 turr values in different colours, fine. **£ 40**

578 RIUDOR DE BAGES Imperf Souvenir Sheet unmounted mint commemorating 1714-1937 with two stamps 5c and 10c in purple and brown, very fine. **£ 60**

579 Segovia Correos - Subscripcion Patriotica 5c in four different designs overprinted Habilitado and surcharge 25c on 5c, 50c on 5c, 1pta on 5c mounted mint in special folder of 16 different stamps. Scarce. **£ 80**

SWEDEN

580 1858-1885 Classics assembly on five album pages incl two covers including 1858-62 basic set of six to 50o red used incl 9o violet (Scott \$440), 1862-69 17o violet (Scott \$130), 1872-85 to both 1r (p.14, short corner Scott \$95), & 1k, officials 874-96 to 1kr used City Postage Locals (3o bistre-brown used 1863 CDS (Scott \$550), etc. Attractive assembly. Approx 50 + 2 cvrs. **£ 85**

SWITZERLAND

581 1854 (20 Feb) Entire Letter Zurich to Baden (Switzerland) bearing nice 1850 (without frame around the cross) 10r yellow, black and red with two three margins tied diamond barred cancel with nice ZURICH CDS alongside, Baden arrival backstamp. **£ 150**

582 1859 (4 May) Entire Letter Peseux to Epinac bearing nice 1858-62 Imperf Helvetias 15r rose and 20r pale orange (20r has good margins) tied PESEUX CDS's along with transit CDS, boxed PD and arrival backstamp. Usual folds. **£ 80**

583 1920 Air 30c pale green and yellow-brown fine used incomplete CDS, very fine with expertising mark TI in violet on reverse, attractive key stamp. SG 302 Cat £1900. **£ 650**

584 1923-40 Air Complete set of 13 mainly fine used CDS copies, attractive and Cat £500. SG 316/328 (cheapest). **£ 160**

585 1996-2014 Nearly complete Year books run of 17 different, each book complete with unmounted mint year sets, miniature sheets, self-adhesives and all special issued made each year, includes 2000 Embroidery (but not the M/S), enormous catalogue values. (just needs 2004 & 2006 to complete). Each page written up in four languages incl English. Lovely lot, high original retail. (17). **£ 750**

586 International Organisations: League of Nations ; 1922-44 Attractive cto fine used 'set' of 36 values 2½c to 10f all nice CDS copies, mostly cancelled by favour CDS copies, SG range LN1-LN33, Cat £1300. **£ 425**

587 International Organisations: United Nations; 1950 Complete set of 20 values fresh unmounted mint, very scarce set complete with Ferrari 1983 Certificate of authenticity. SG LU1/20, Cat £700. **£ 350**

588 Officials: 1918 (July) Industrielle / Kriegs - / wirtschaft first overprint on 3c orange-brown tied to paper by Dec 1918 CDS, expertised EZ h/s in violet on reverse, nice example. SG O299 Cat £400. **£ 125**

589 Officials: 1918 (July) Industrielle / Kriegs - / wirtschaft first overprint on 7½c grey (SG type 18b) unmounted mint, very fresh, just couple of contemporary specks on gum, nice example. SG O301 Cat £450. **£ 180**

THAILAND

590 1883-1960 Useful fine used assembly on Hagners with better content throughout including 1883 1a carmine, 1s orange (Cat £60), 1880s-90s surcharges from different printings, 1899 1a green (cat £110, faults), 2a green and red (Cat £160, small faults), 1907 Fiscal 20t green (torn, cat £500), 1908 Statue to 5t, 1912 10b (Cat £110), 20b top value (Cat £130), 1918 Red X 1b (Cat £47), 2b (Cat £55), 1920 Scouts Type 1 ovpts to 1t (taken as is, cat £550), Scout Fund ovpt to 1t (taken as is Cat £400), 1920 Third Scout ovpts to top values (taken as is Cat £300), 1928 20b & 40b (Cat £140), 1941 to 10b (Cat £120), useful cat £2700+. (100s). **£ 750**

591 1885 1Tical on 1solot blue mounted mint with hinge remains, short corner otherwise very fresh and fine, seldom seen, SG 7 Cat £600. **£ 180**

592 1908 Statue of King Chulalongkorn set of seven used, mostly fine decent CDS cancels, top value has large tear (not counted, cat £400), SG 118/124. Cat £370. **£ 75**

593 1912 King Vajiravudh 10b olive-green and purple brown fine used CDS, SG 157. **£ 38**

594 1912 King Vajiravudh 20b slate blue and red-brown top value fine used CDS's, SG 158. **£ 42**

595 1918 Red Cross Fund 20b (+1b) sea green and brown top value decent CDS cancel, slight thinning otherwise scarce key value of Thailand, SG 187, cat £2000. **£ 300**

596 1920 Scout's Fund 10s on 12s (+5s) brown and black fine used in block of 4 with central CDS, fine, SG 202... **£ 85**

597 1920 Scout's Fund 3s (+2s) green fine used in block of 4 with central CDS, bottom right has neat hole otherwise, fine, SG 200. **£ 60**

598 1920 Scout's Fund first ovpt four fine used values 2s, 3s, 10s on 12s, 15s (+5s) blue (Cat £180), mainly sound, SG 199/200, 202/3. **£ 125**

599 1920 Scout's Fund second ovpt set of 6 fine used, except for 3s (+2s) green hinged mint, few uneven perfs otherwise fine, nice 1t (+25s) bistre and blue top values (Cat £400) SG 205/210. **£ 225**

600 1920 Scout's Fund second ovpt set to 15s (+5s) blue just needs top value to complete. SG 205/209. **£ 125**

601 1939 Red Cross set of three fine used nice CDS cancels, sound, SG 277/9. **£ 38**

602 1941 Ban Pa'im Palace top values 2b to 10b unmounted mint, fine, SG 298/301. **£ 100**

603 Thai Occupation of Malaya: Trengganu 1944 overprint on pictorial Tapping Rubber 3c drab mounted mint, several pulled perfs on right hand side otherwise scarce and seldom offered, SG TT21. Cat £400. **£ 40**

TONGA

604 1934 (10 May) Registered OHMS cover to Canada bearing 1920-35 ½d and 5d defins tied NUKUALOFA CDS cancels, Regd No.3103, good range of backstamps incl KAMLOOPS few minor bends around the edges nice commercial use. SG 55 & 60. **£ 40**

TRANSSVAAL

605 Griqualand: Revenues; 1879 £1 red portrait from Herbert Bourne tall revenue neatly cancelled pen ink manuscript. Mainly fine and seldom offered. Also 6d blue, Barefoot 62, 70. (2). **£ 150**

TRINIDAD & TOBAGO

606 1894 P.14 5s maroon mounted mint, very fresh appearance, SG 113. **£ 25**

607 1917 WAR TAX overprint on ½d deep green in a complete sheet of 120 unmounted mint, folded twice with plate 1 imprint. Small split otherwise fine. SG 183. **£ 38**

608 1917 WAR TAX overprint on ½d green in a complete sheet of 120 unmounted mint, folded twice with plate 1 imprint. SG 177. **£ 48**

609 1918 WAR TAX overprint on 1d red in a complete sheet of 120 unmounted mint, folded twice with plate 1 imprint. Row 8 / 4 shows comma before W non constant variety, SG 186. **£ 60**

610 SPECIMEN Overprints on Queen Victoria Tobago ½d green reply card, single card, 2d grey registered postal stationery envelope, 1d red single card, 1d red reply card, GVI 1c green single card, 6c dark blue registered postal stationery envelope mainly fine. 7 items. **£ 85**

TRISTAN DA CUNHA

611 1952-1999 Collection of mint, and QEII unmounted mint sets in a nice KA-BE album, 1963 ovpt set, 1965 set, 1994 Ships, includes overall large amount of completion includes miniature sheets, postage dues etc, good catalogued lot. **£ 150**

TURKEY

612 1851-1879 Classics assembly on album pages including Postage Dues 1863 set of 4 (Scott \$205), local issue Type IV ovpt in red on 10pa used, then nice little group of Turkey 1865-82 defins to 5pi m & u, 1869 2pi orange-red mint (Scott \$200), 1876 to 25pi m & u, all identified etc. Attractive collection with many nice copies. (Approx 40). **£ 125**

613 Revenues: Assembly of eleven different revenues on paper in original USA dealer packets each identified includes Religious Courts 100pi red (McDonald 26), 100pi orange-brown (Mac 27a), Foreign Affairs, Playing Cards 5pa (Mac 3), Real Estate Transfer (Mac 27), Police Courts 1890 5pi (Mac. 2), Treasury Tax 1910 100pi (Mac 10), Travel Permit 1905 2pi (Mac 21). Nice clean range mainly without faults. McDonald Cat \$110. (11). **£ 40**

TURKS & CAICOS ISLS.

614 1919 War Tax 3d purple on orange-buff top left corner marginal block of four unmounted mint, with top left stamp showing dramatic kissprint of the W in War, nice clear variety, SG 151 var. **£ 20**

UNITED STATES

615 1861-66 F Grill 5c brown sound used attractive example centred NE, used indistinct black cork cancel with mostly good perfs and colour, Scott 95 Cat \$850. **£ 180**

616 All periods mint and used collection in well filled springback album, very mixed includes 19th century to 24c lilac, 30c black, 1890 to 30c black, 1894 to \$1 black, 1902 to \$1, dozens of defins and commems etc, large qty mostly all different. **£ 75**

WALLIS AND FUTUNA ISLANDS

617 1920-2000 Extensive unmounted mint collection in a well filled 64 sided stockbook, high degree of completion for defin sets, commem sets, miniature sheets, airs and postage issues with good catalogued sets throughout, noted 1920 to 5f m, 1922 surchs to 20f on 5f m, 1930 long set to 20f m, 1941 France Libre ovpt set to 20f incl 3c (Cat £130), 45c (Cat £140), 60c (Cat £130), 2f50 brown (Cat £200), 20f (Cat £130), 1927 P. Due surch set 2 m, 1943 France Libre ovpt set m (Cat £610), then a smaller collection of imperf sets and singles (some marginal) U/M (approx 115), ideal for completion, attractive collection of modern issues. Enormous cat value. **£ 1800**

618 Epreuve De Luxe attractive collection of imperf cards for a variety of different issues in a stockbook including 1987 Basilica Anniv. 230f air, 1987 Wrestling 97f, 1984 Olympics, 1983 Xmas set of 2, 1983 Cat 102f air, Flowers, 1972 Fiji etc, very attractive, (31 different).
£ 150

YUGOSLAVIA

619 1944-1974 An extensive mint & used collection in a well filled Lighthouse printed album, dozens of commem sets, better periods incl. 1950s, plus setenant, miniature sheets etc, nice lot for expansion. Approx 1050+.
£ 110

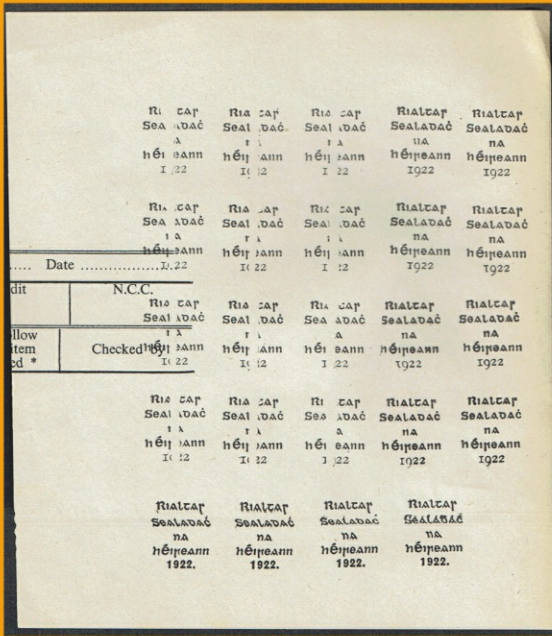
ZANZIBAR

620 Balance of an auction lot with duplicated mint and used arranged on Hagners includes 1895 Zanzibar overprint in black some with minor varieties mint on India ½a blue-green (2), 1a plum (3), 1a6p, 2a used, 2½a green (2), 4a m & u, 12a purple on red mint (2), 1896-98 both wmk incl ½a yellow-green (6), 1a mint (4), 2a (3), 2½a blue (8) mint, 3a mint (2), 4a mint (7), 4½a orange mint (2), 5a mint (2), , 7½a mint (4), 1r mint, 1r mint ovptd Specimen, 1r used, 2r used, 1899-1901 ½a mint (10), 1a (6), 1a mint (3), 2a mint (6), 3a grey mint (6), 4a m (2), 4½a orange, 5a mint (3), 1r mint, 1904 3r violet and red mint (Cat £65). Some shades, useful group with good cat value. Approx 70+.
£ 160

ZULULAND

621 1888-93 Mint assembly of seven different values ½d vermilion to 1s dull green all hinged mint, few with gum faults, 1s has few toned perfs but good colour, SG 1/5, 7 & 10 Cat £396.
£ 150

End of Auction - Thank You



440



540



Ex 329

374



Ex 202



121



190



236



145



597



596



110



422



599



490



235



436



594



172



595



426




303




541



524



 BY APPOINTMENT
 TO HER MAJESTY THE QUEEN
 PRINTERS


HARRISON AND SONS LIMITED
 7, Cavendish Square, London, W.1.
 PHOTOGRAVURE STAMP SPECIALISTS


 Norfolk Island 45c

505

TERRITORY OF PAPUA AND NEW GUINEA




 PAPUA & NEW GUINEA
 6d

DEPARTMENT OF POSTS AND TELEGRAPHS

515



419



474



589



583



442



615



535



124



128



103



260



108



543



542



478



Ex 520



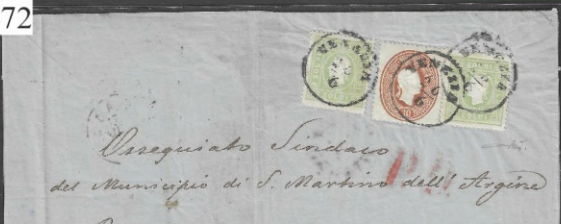
481



Ex 92

472

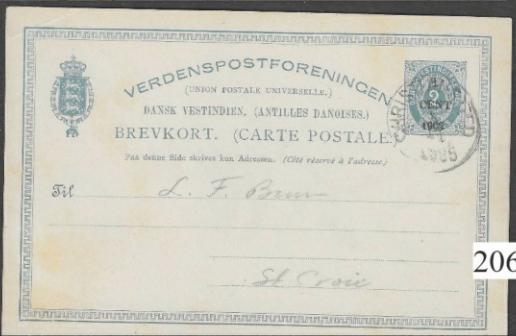
274



184



186



187

206



451

276

GUOZI SHUDIAN
CHINA PUBLICATIONS CENTRE
P.O. Box 399, Peking, China

航空
PAR AVION

2P 67DF463 2/67-1/68
Gilberto ISELLA
c/o Meurat-Ner
26 Av. du Mail
Geneve
Suisse



c. 15/67

GUOZI SHUDIAN
CHINA PUBLICATIONS CENTRE
P.O. Box 399, Peking, China

航空
PAR AVION

2P 67DF463 2/67-1/68
Gilberto ISELLA
c/o Meurat-Ner
26 Av. du Mail
Geneve
Suisse



c. 15/67

199



482



217



218



223



214



221



215



216



222



466



495



Ex 534



321



553



245



456



605



493



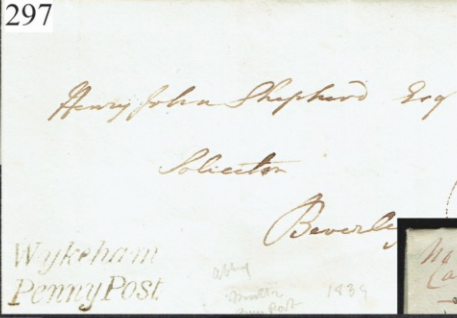
298

289



300

297



273

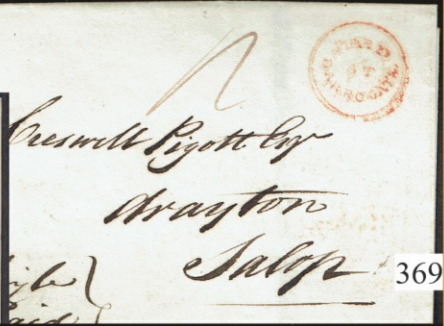
295



301



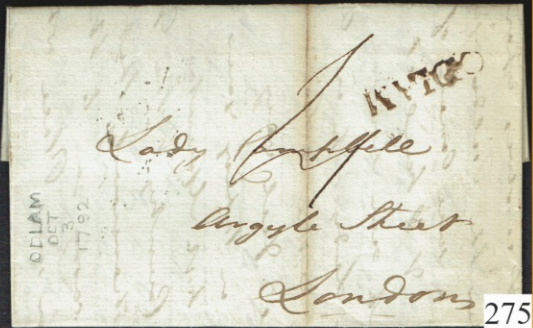
509



369



369



275

The Stamp Group Terms & Conditions (Revised April 2009)

TERMS AND CONDITIONS

BIDDING

- 1) Enter on the Postal Bid Form the maximum amount you are prepared to pay for each lot. We will buy on your behalf at the lowest possible price subject only to other bids received. ALL BIDS MUST BE IN STERLING.
- 2) Enter bids for every lot in which you are interested. If you wish to limit your total expenditure mark your limit on the bid form. We shall stop buying for you if and when this figure is reached.
- 3) BUY bids are not accepted to prevent misunderstanding - your limit should be the figure at which you would stop bidding in the room at the public auction.
- 4) Where two or more equal bids are received the first such bid received in our office will take precedence. Therefore please mail bids as early as possible.
- 5) Bids of unusual amounts (e.g. £6.60) are reduced to the normal level (e.g. £6) and do not take precedence over a similar bid of £6 if not received first.
- 6) ALL BIDS ARE CONFIDENTIAL AND WILL NOT BE DISCLOSED TO THIRD PARTIES.
- 7) Bidding increases as follows: Up to £20 in £1 steps, over £20 in £2 steps, over £100 in £5 steps, over £200 in £10 steps.
- 8) The estimates given reflect the auctioneer's opinion of current market value (bearing in mind that many lots will have been described several months prior to the sale date). The majority of lots will probably sell for within 20% above or below estimate, although some lots will go much higher. 'Low-ball' bids will be ignored.
- 9) A buyer's premium will be charged on a scale outlined in our Terms of Business.

DESCRIPTIONS

- 1) Our descriptions of the condition and quality of stamps can be relied upon to be fair and honest, but any lot found not to be as described may be returned for immediate refund or credit.
- 2) Conditions of covers: in most cases (except modern F.D.C's etc.) minor creasing and/or age-staining/tropicalisation are the norm and are not mentioned unless they are unsightly.

V.A.T.

Buyers resident in the E.E.C. or taking delivery of lots at the auction will be liable to pay V.A.T. at the standard rate on those marked with the symbol 'T' in the catalogue. Overseas buyers are exempt from paying V.A.T. if the lots are posted to an address outside the E.E.C.

DESPATCH AND PAYMENT

Lots dispatched within the U.K. and Overseas will be sent Recorded Delivery or by Registered Letter (Airmail for overseas) where the value is over £50, or by parcel for heavy lots.

Invoices and lots will be dispatched as soon as possible after the sale. However the invoicing, packing and mailing of around 600 lots does require time and buyer's tolerance is requested.

PHILATELIC AUCTIONEERS' STANDARD TERMS AND CONDITIONS OF SALE

NOTICE. THE STAMP GROUP the Auctioneers exercise the greatest possible care to ensure that all statements as to cancellation, centering, colour, condition, date of issue or of postal marking, gum, margins, paper, perforation, provenance, quality, sheet position, status, usage and watermark etc., in the lot descriptions are reliable and accurate and that each item, unless the contrary is indicated, is genuine and authentic. The statements however, are not intended to be, are not to be taken to be, statements of fact or representations of fact. They are statements of the opinion of the Auctioneers, and attention is particularly drawn to clause 6 of the Philatelic Auctioneers' Standard Terms and Conditions of Sale below. Certain lots may contain notes, lists, writing-up, printed statements etc. These do not form part of the description and are not to be taken as such.

1. The highest bidder of each lot shall be the purchaser thereof. If any dispute arises as to the highest bidder the Auctioneer shall determine the dispute and may put up again and re-sell the lot in respect of which the dispute arises.
- 2.(a) The bidding and advances shall be regulated by and at the discretion of the Auctioneer.
- (b) Where an agent purchases on behalf of an undisclosed client such agent shall be personally liable for payment of the purchase price to the Auctioneer and for sale delivery of the lot to the said client.
- 3.(a) The Auctioneers reserve the right to bid on behalf of Clients and Vendors. but shall not be liable for any errors or omissions in executing instructions to bid.
- (b) The Auctioneer reserves the right before or during a Sale to group together lots belonging to the same Vendor, or to split up and/or withdraw any lot or lots.
4. Each lot shall be at the purchaser's risk from the fall of the hammer and must be paid for in full before delivery. If any purchaser fails to pay for any lot within one month from the date of Sale, such a lot may at the Auctioneer's discretion be put up for auction again or sold privately if upon a re-sale a lower price is obtained for such a lot than was obtained on the first sale, the difference in price and the expense of such re-sale shall be made good by (and debt due from) the purchaser in default upon the first sale.
5. The Auctioneer shall not be liable for any default of the Purchaser or Vendor.
- 6.(a) Unless otherwise indicated each lot is sold as genuine and properly described.
- (b) If after the Sale the purchaser of a lot shall prove it not to be genuine or wrongly described the purchaser shall be at liberty to reject the lot provided he or she - (i) being within the United Kingdom within seven days or being overseas within a reasonable time of the date of the Sale gives notice in writing to the Auctioneer of intention to question as the case may be genuineness or description of the lot. AND (ii) within thirty days of the Sale (or in exceptional cases, such longer time as may be in the Auctioneer's discretion be allowed for expertising) returns such lot to the Auctioneer. NOTE: the onus of providing the lot to be not genuine or wrongly described lies with the purchaser. Proof of the ability of an Expert Committee to express a definite opinion will not discharge such onus. No refund shall be issued for the cost of the Certificate.
- (c) No lot may be rejected if subsequent to the Sale it has been immersed in water or treated by any such process unless the Auctioneers's permission to subject the lot to such immersion or treatment has been first obtained.
- (d) Lots stated to contain collections and/or undescribed stamps must be taken with all faults and errors as to numbers (if any), and by reason of the foregoing a purchaser of any such lot shall have no right to reject the same.

SPECIAL CONDITIONS

Where two or more lots are described as similar lots, and are identical in content and value, a bid for one lot will be equally valid for any other similar lot unless instructions are given to the contrary.

Overseas bidders not intending to make payment in Sterling are requested to state on the bid form the currency to be used.

The placing of a bid will be taken as full agreement to the above conditions.

Bidform

Last Fax and E-mail Bid Acceptance time auction day at 7am



Sale Date: Tuesday 28th March 2023

Auction Number: 367

THE STAMP GROUP
Philatelists & Auctioneers

Name (*Capitals*):.....
 Address:.....

 Postcode:.....
 Telephone No:.....

Posting address:
 267 Middlewich Rd
 Northwich
 CW9 7DR

Tel: 01606 40047
 Fax: 01606 41584

Email: info@stampgroup.net

Please bid on the following lots for me up the maximum shown, I understand and agree to abide by the terms and conditions of sale as printed in the catalogue.

Lot No	Bid £	Lot No	Bid £	Lot No	Bid £

Please tear or cut entire page

Card Payment (Please give details below if applicable)

Please charge my (Delete as appropriate): Mastercard / Visa / Switch/Maestro No.

--	--	--	--	--	--	--	--	--	--	--	--	--	--	--	--	--	--	--	--

Valid From:	<input type="text"/>	Expiry Date:	<input type="text"/>	Issue No. (if appropriate)	<input type="text"/>	Last 3 security digits on reverse	<input type="text"/>
-------------	----------------------	--------------	----------------------	----------------------------	----------------------	-----------------------------------	----------------------

OR: **Payment on receipt of Invoice** **Blank cheque enclosed**

Signature:.....Date:.....

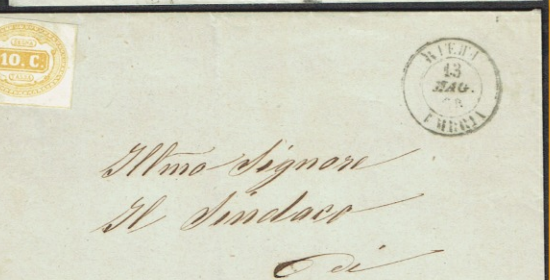
581



485



421



446



132



582

Le Directeur de la Société Anon
Bouillie de Hou Obéma de



Miss M. Leadbetter.
of Mrs Ball.
3 Gainsborough House,
111 St. James Street 398
Shepherd's Bush LONDON



262

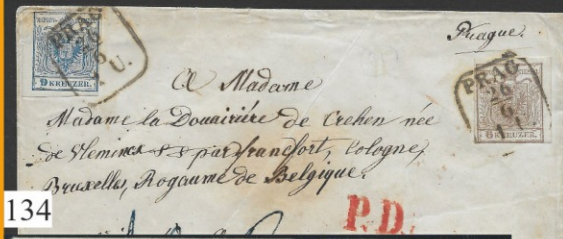
Seldpostkarte

In
Lorenz F. W. Jupp
in
Bremen
L. Jupp
Postamt



Franken.
a H 50
Daneifford

353



134

Madame
Madame la Douairière de Cechon née
de Henin et par mariage, Cologne,
Bruxelles, Royaume de Belgique.



Mr Haynes V. Moore
Solos
Leamington

307



259



522

Ex 263